



*Community Cost-Share Program
Application*

**Community Cost-Share Program
APPLICATION**

Member Community Information

Community: City of Parma

Primary Project Contact: Brian Higgins
(Name & Title) Service Director

Mailing Address: 6611 Ridge Road
Parma, Ohio 44129

Phone Number: 440-885-8984

Email: bhiggins@cityofparma-oh.gov

Project Information

Project Title: Headwall Repair & Storm Drainage Imp.

Address or Location of Project: 1560 Lourdes Drive
Parma, Ohio

Project Start Date: 3/15/2020

Project End Date: 6/15/2020

Community Cost-Share Fund Request: \$127,500.00

Submission Date: 09/09/19



Project Narrative

1) Project Summary (1,000 word maximum)

Describe the Project and include the following information, as applicable:

- Describe the Project and deliverables; provide a map if applicable
- Submit a deliverable worksheet listing tasks and deliverables with start dates and end dates for the significant benchmarks.
- List permitting requirements necessary to initiate and complete project and how the requirements will be met.

At this location, overland storm flows have caused surface erosion and minor ground cavities have formed at the top of the stacked concrete slab slope above the headwall. Also, the storm sewer pipe has broken and separated at the back of the headwall. The design concept is to control overland flows by performing re-grading the rear yard swales and a retrofit of the inlet structures, fill in the ground cavities near the top of the slope with aggregate and repair the broken storm sewer in place.

Work will include modifying the two existing rear yard storm basins, and adding side inlets to ensure surface runoff is captured and collected. The top of the existing storm manhole will be lowered and the solid lid replaced with an inlet grate. A new catch basin will be installed to collect additional surface runoff before it gets to the slope above the headwall. Re-grading of swales will accompany the other drainage improvements. The storm sewer at the headwall will be repaired in place through a method to be determine (e.g. pipe lining, pressure grouting, replacement of the broken section of pipe etc.

The proposed construction access to this site is via the existing easement between the homes which are approximately 35 feet apart. Some clearing and removal of landscaping features will be needed. Right of entry agreements or temporary access easements adjacent to the work area may be required for the proposed repair project.

2) Ability to Provide Long Term Maintenance (500 word maximum)

Describe the plans for long-term maintenance, addressing the following question:

- Who is responsible to provide on-going maintenance for the project and how will maintenance be ensured?
- Provide documentation of scheduled maintenance and operation for completed stormwater project(s).

The City will be responsible to schedule inspection and subsequent maintenance as needed. At least annually but more if needed, drainage structures will be inspected with the Sewer Department's Sewer Supervisor being responsible to keep charts and/or maps of these inspections and condition reports. In addition, Service Department workers can supplement these reports with any drainage work item needing attention, cleaning or repairs while they are out performing their regular duties and notice items of concern which they can pass on to the Supervisor for future work scheduling assignments. The inspection and maintenance duties will be compiled into the annual report which is sent to the Ohio EPA to meet the MS4 requirements.



*Community Cost-Share Program
Application*

3) Visibility and Public Outreach: (500 word maximum)

Public outreach is required if appropriate for your project.

- What audiences will be exposed to this Project (neighbors, students, community groups, general public)?

The homeowners on Lourdes Drive, especially adjacent to the work area will be notified by the City of the upcoming work. Included in this notification to the homeowners will be a person as a point of contact with a phone number and email address so residents and any other interested party can get updates on the progression of the work.

4) Budget Summary (500 words maximum)

The Budget Summary and Project Budget (*see page 3*) represent the Community Cost-Share Project components exclusively. Include details on the provider of all services such as design, engineering, construction management and materials including specific material cost, equipment, and hourly rate.

If an engineer's estimate is included with the application, indicate which line items are included in the Community Cost-Share Project application.

See the Attached Engineer's Construction Cost Estimate



*Community Cost-Share Program
Application*

Vendor Registration

Prior to submission, ensure that the Member Community is a registered vendor with the District. Vendor Registration can be done by accessing http://www.neorsd.org/isupplier_homepage.php and completing the New Vendor Registration. If unsure of the Member Community vendor status, by initiating the New Vendor Registration a message of active registration will appear if currently registered as a vendor.

Project Budget

Project Expenses	Community Cost-Share Expense	Line Item Description
Professional Services	\$10,000.00	Engineering Design Costs
Personnel <i>(Member Community staff only)</i>	\$7,500.00	Inspection and Contract Administration Costs
Subcontract		
Equipment		
Materials		
Other	\$110,000.00	Construction & Contingency Estimated Cost
TOTAL	\$ \$127,500.00	Total Cost Estimate

PRELIMINARY COST ESTIMATE - PREPARED BY DONALD BOHNING & ASSOCIATES
LOURDES DRIVE - STORM SEWER OUTFALL REPAIR & DRAINAGE IMPROVEMENTS
CITY OF PARMA
PROJECT NO. 4290-8
AUGUST 20, 2019

NO.	DESCRIPTION	ODOT ITEM	TOTAL QTY.	UNIT	UNIT PRICE	ITEM TOTAL
	<u>ROADWAY/ SITE</u>					
R1	CLEARING AND GRUBBING	201	1	L.S.	\$15,750.00	\$15,750.00
R2	VIDEO TAPING EXISTING CONDITIONS	SPEC	1	L.S.	\$840.00	\$840.00
R3	UTILITY ALLOWANCE	SPEC	1	L.S.	\$5,250.00	\$5,250.00
R4	PRIVATE FACILITY ALLOWANCE	SPEC	1	L.S.	\$2,625.00	\$2,625.00
R5	2 1/2" DIA. (B & B) DECIDUOUS TREE INSTALLED	661	4	EA.	\$525.00	\$2,100.00
R6	LINEAR GRADING	SPEC	190	L.F.	\$10.50	\$1,995.00
R7	REMOVAL AND RE-SETTING OF CONCRETE SLABS, INCL. GROUND CAVITY REPAIR AND OVERLAND SWALE GRADING, PER PLAN	SPEC	1	L.S.	\$7,875.00	\$7,875.00
	SUBTOTAL					\$36,435.00
	<u>EROSION CONTROL</u>					
E1	MAINTENANCE OF EROSION CONTROL ITEMS	207	1	L.S.	\$1,050.00	\$1,050.00
E2	INLET PROTECTION	207	3	EA.	\$105.00	\$315.00
E3	SILT FENCE	207	70	L.F.	\$10.50	\$735.00
E4	RESTORATION OF DISTURBED AREAS	SPEC	1	L.S.	\$10,500.00	\$10,500.00
E5	BIODEGRADABLE EROSION CONTROL BLANKET	SPEC	120	S.Y.	\$7.35	\$882.00
E6	TEMP. ORANGE CONSTRUCTION FENCING	SPEC	1350	L.F.	\$4.20	\$5,670.00
	SUBTOTAL					\$19,152.00

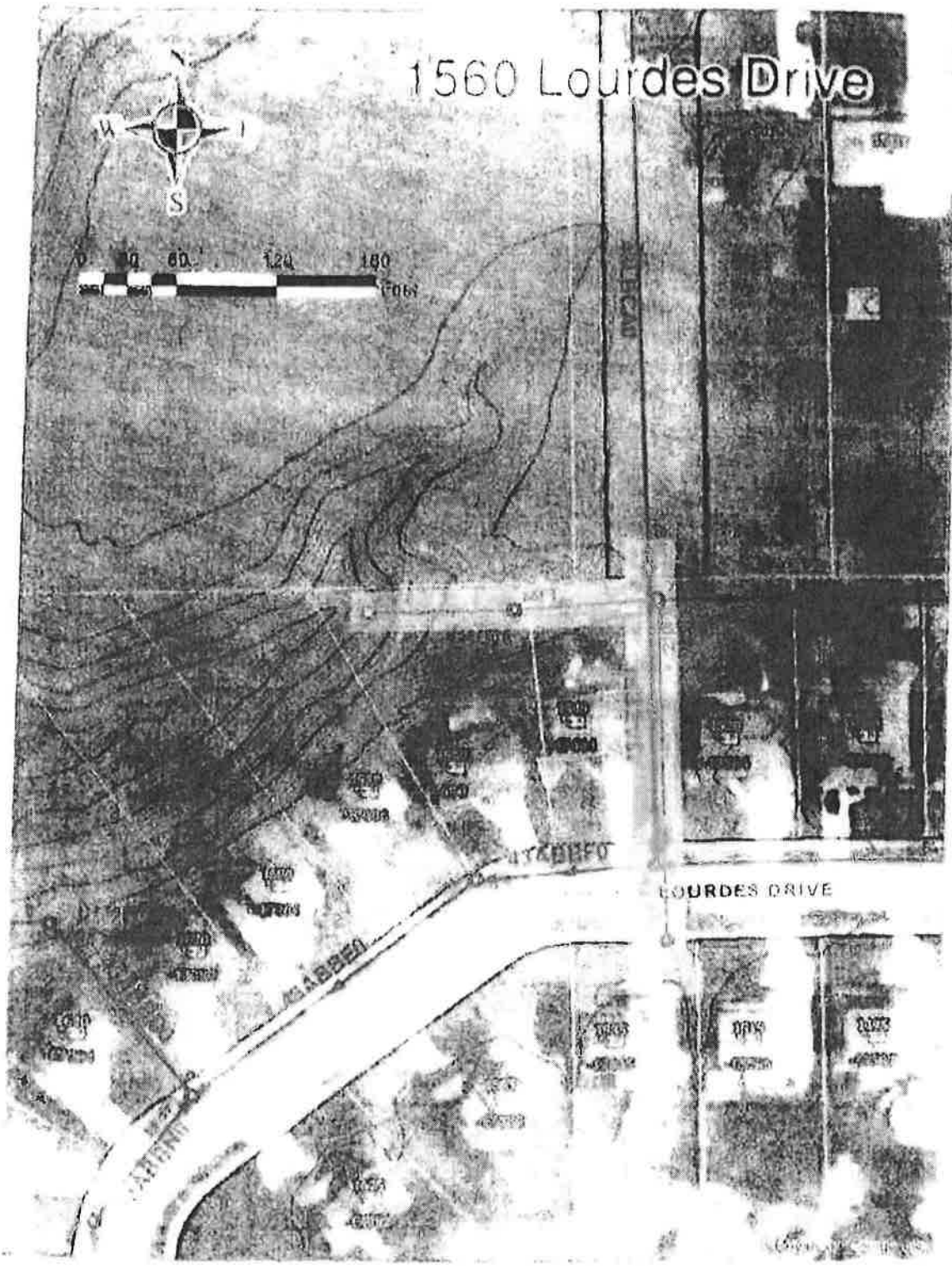
**PRELIMINARY COST ESTIMATE - PREPARED BY DONALD BOHNING & ASSOCIATES
LOURDES DRIVE - STORM SEWER OUTFALL REPAIR & DRAINAGE IMPROVEMENTS
CITY OF PARMA
PROJECT NO. 4290-8
AUGUST 20, 2019**

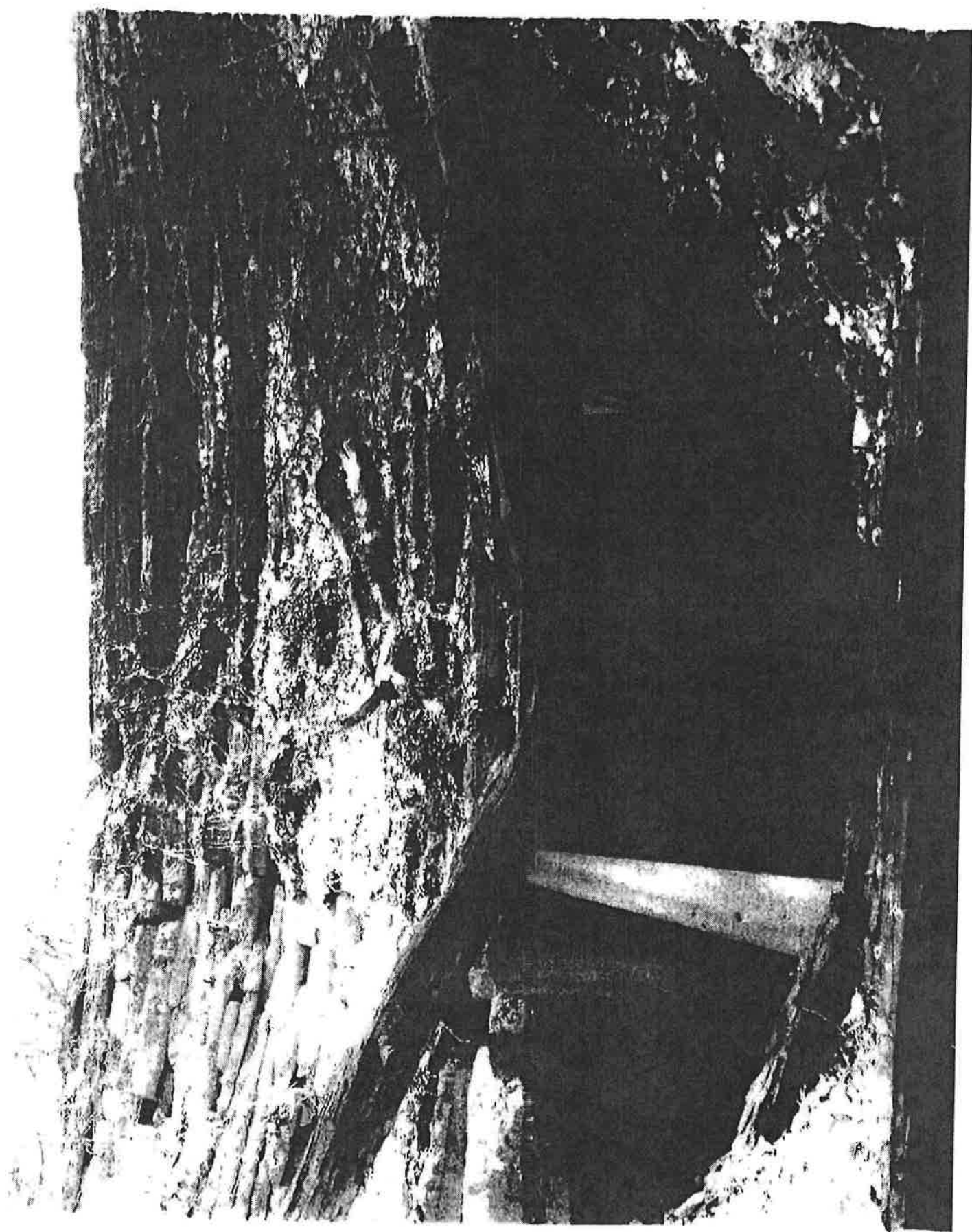
NO.	DESCRIPTION	ODOT ITEM	TOTAL QTY.	UNIT	UNIT PRICE	ITEM TOTAL
	<u>STORM SEWER</u>					
ST1	15" STORM CONDUIT, HDPE	611	25	L.F.	\$52.50	\$1,312.50
ST2	CATCH BASIN 2-2B	611	1	EA.	\$2,100.00	\$2,100.00
ST3	MODIFY EXTG. STORM MANHOLE W/NEW FLAT SLAB TOP AND INLET CASTING, INCL. DISPOSAL OFF-SITE, PER PLAN	611	1	EA.	\$3,150.00	\$3,150.00
ST4	MODIFY EXTG. CATCH BASINS W/NEW CATCH BASIN 2-2A TOP SECTION, INCL. DISPOSAL OFF-SITE, PER PLAN	611	2	EA.	\$1,575.00	\$3,150.00
ST5	SUBBEDDING MATERIAL	SPEC	50	TON	\$42.00	\$2,100.00
ST6	CONNECTION TO EXISTING STORM MANHOLE	SPEC	1	EA.	\$525.00	\$525.00
ST7	REPAIR OF STORM SEWER AT EXISTING HEADWALL	SPEC	1	L.S.	\$5,250.00	\$5,250.00
	SUBTOTAL					\$17,587.50
	<u>PAVEMENT</u>					
P1	CONCRETE WALK REMOVAL INCL. DISPOSAL OFF-SITE, FULL DEPTH SAW CUTTING	SPEC	115	S.F.	\$3.15	\$362.25
P2	4" CONCRETE WALK INCL. 2" AGGREGATE BASE	608	115	S.F.	\$6.25	\$718.75
	SUBTOTAL					\$1,081.00
	<u>TRAFFIC CONTROL</u>					
TC1	MAINTAINING TRAFFIC	614	1	L.S.	\$2,100.00	\$2,100.00
	SUBTOTAL					\$2,100.00
	<u>MISCELLANEOUS</u>					
M1	VIDEO INSPECTION AND TESTING OF STORM SEWERS	SPEC	1	L.S.	\$787.50	\$787.50
M2	GEOTECHNICAL INSPECTION AND TESTING	SPEC	1	L.S.	\$2,625.00	\$2,625.00
M3	CONSTRUCTION LAYOUT STAKES AND AS-BUILTS	SPEC	1	L.S.	\$903.00	\$903.00
M4	DISCRETIONARY ALLOWANCE	SPEC	1	L.S.	\$10,500.00	\$10,500.00
M5	INSPECTION, PERMITS & TESTING FEES	SPEC	1	L.S.	\$2,709.00	\$2,709.00
M6	PERFORMANCE BOND	SPEC	1	L.S.	\$1,806.00	\$1,806.00
M7	MAINTENANCE BOND	SPEC	1	L.S.	\$1,806.00	\$1,806.00
	SUBTOTAL					\$21,136.50

PRELIMINARY COST ESTIMATE - PREPARED BY DONALD BOHNING & ASSOCIATES
LOURDES DRIVE - STORM SEWER OUTFALL REPAIR & DRAINAGE IMPROVEMENTS
CITY OF PARMA
PROJECT NO. 4290-8
AUGUST 20, 2019

NO.	DESCRIPTION	ODOT ITEM	TOTAL QTY.	UNIT	UNIT PRICE	ITEM TOTAL
	<u>SUMMARY</u>					
	ROADWAY/ SITE					\$36,435.00
	EROSION CONTROL					\$19,152.00
	STORM SEWER					\$17,587.50
	PAVEMENT					\$1,081.00
	TRAFFIC CONTROL					\$2,100.00
	MISCELLANEOUS					\$21,136.50
	TOTAL					\$97,492.00

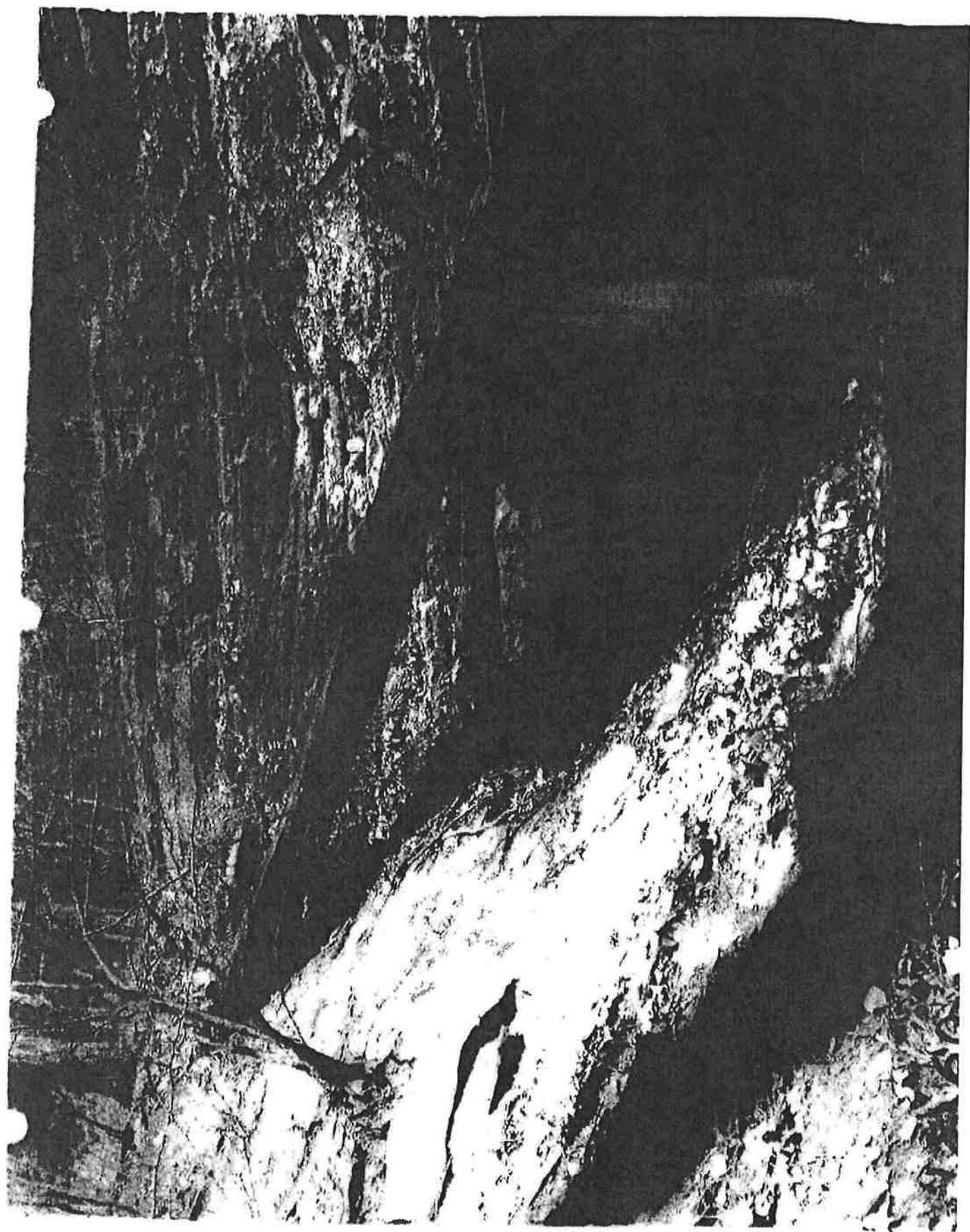
1560 Lourdes Drive

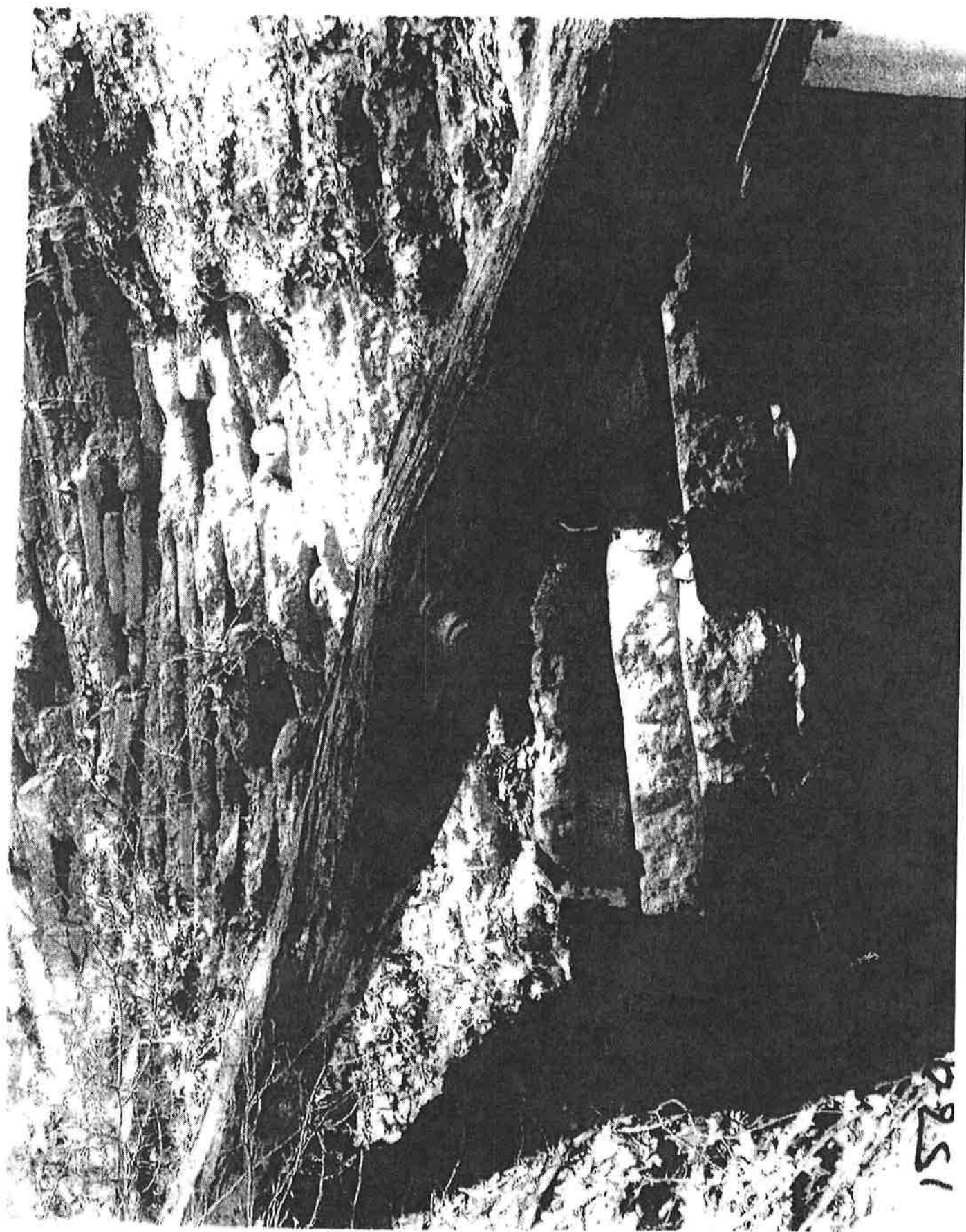




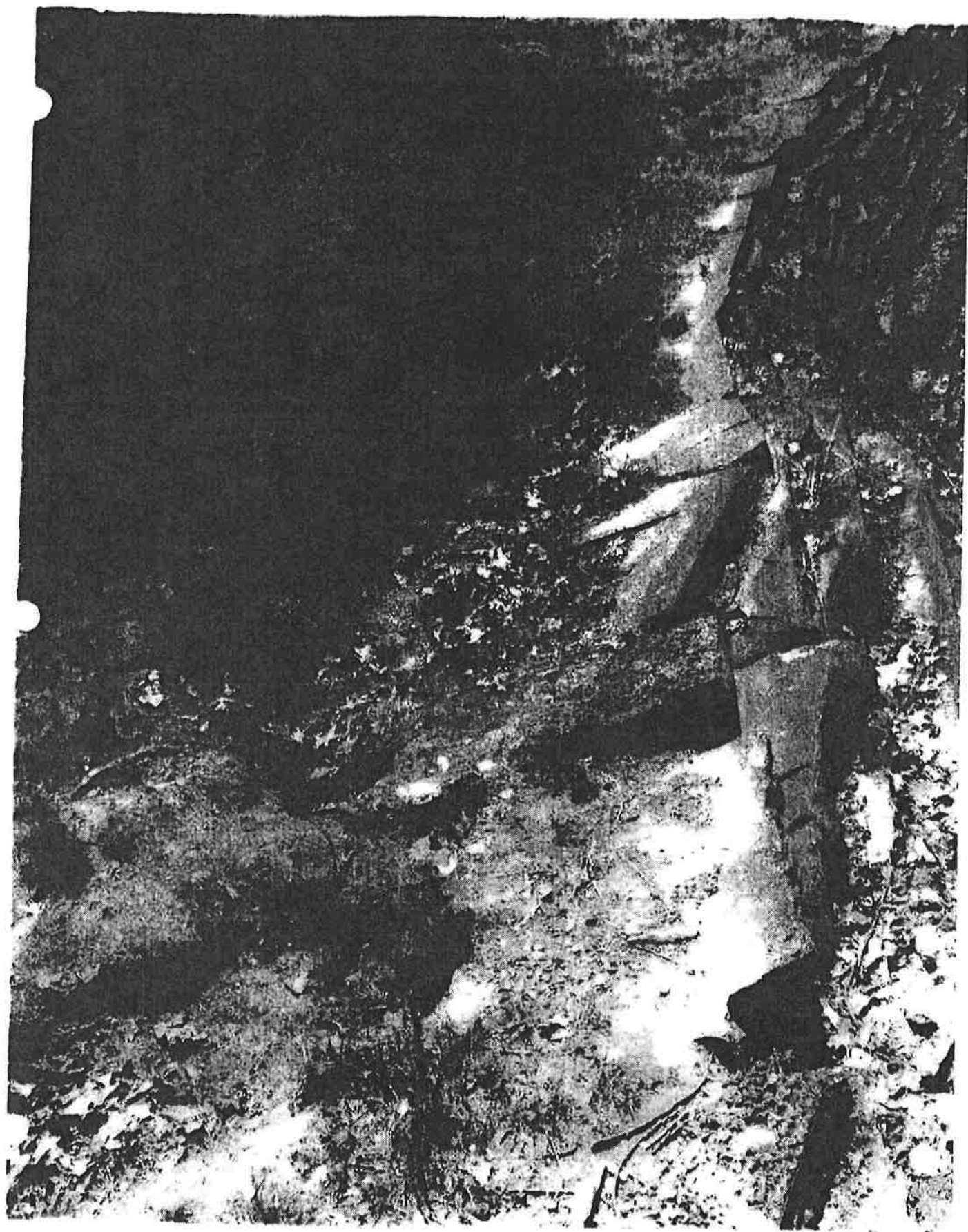


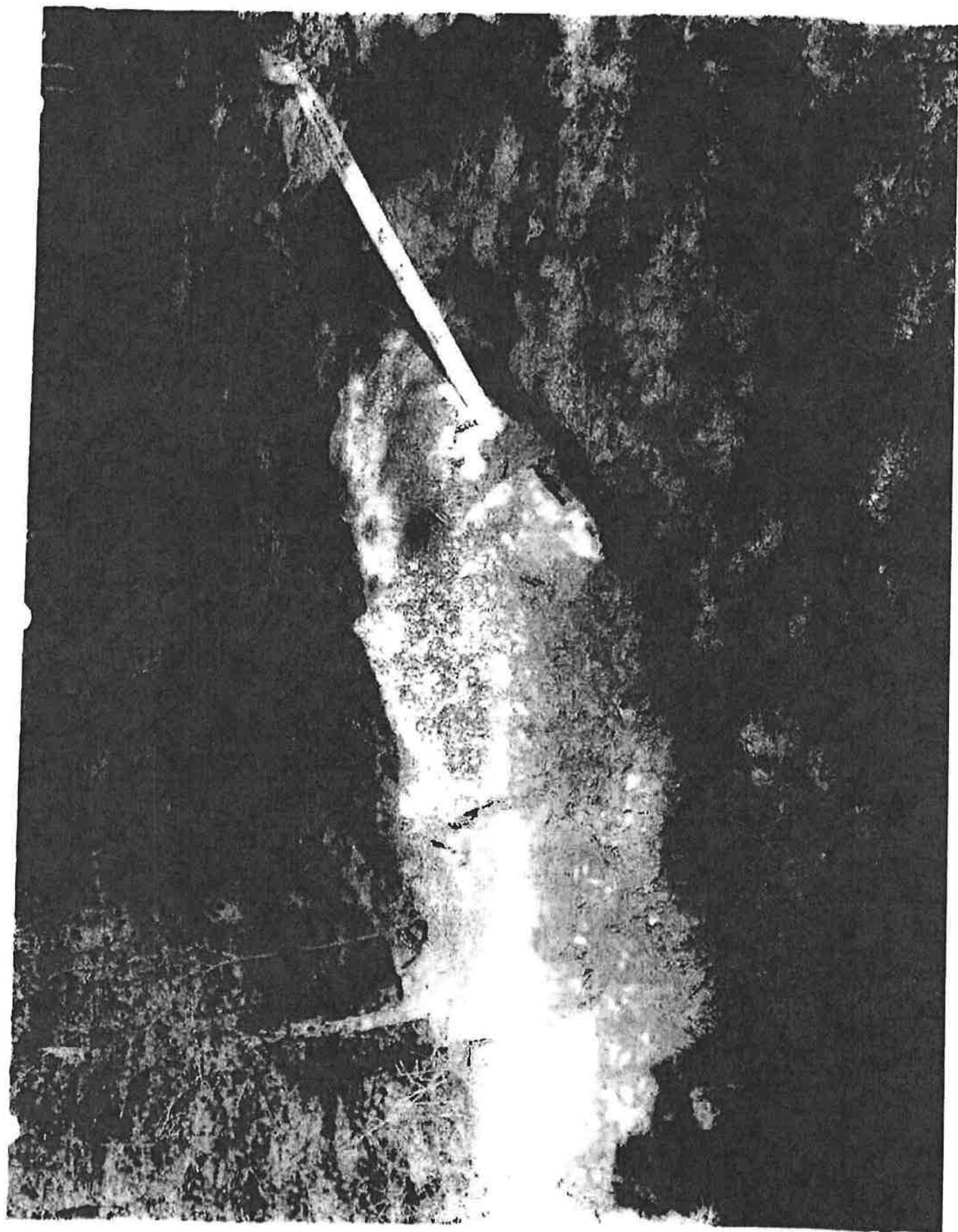
1510 13.02.71

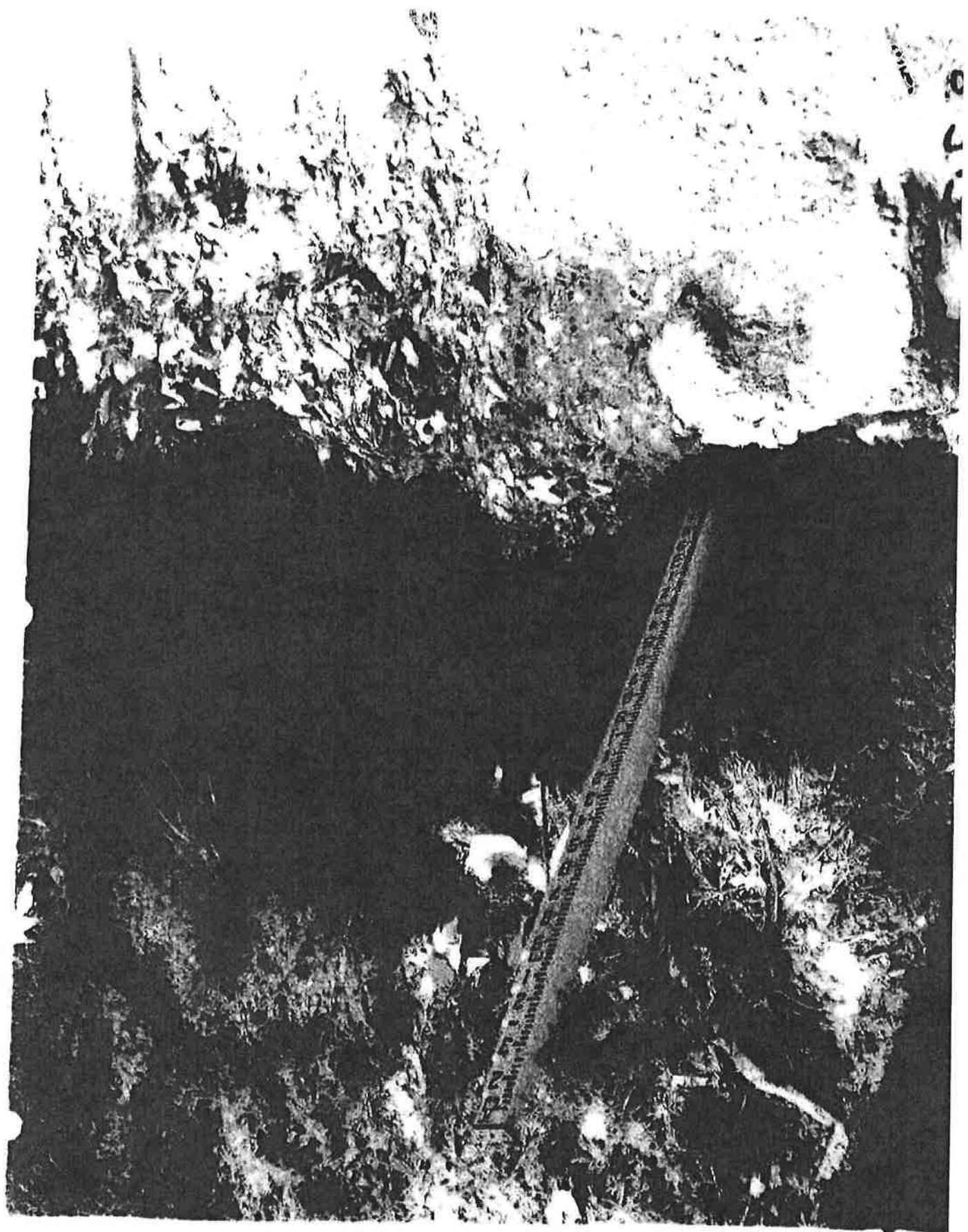


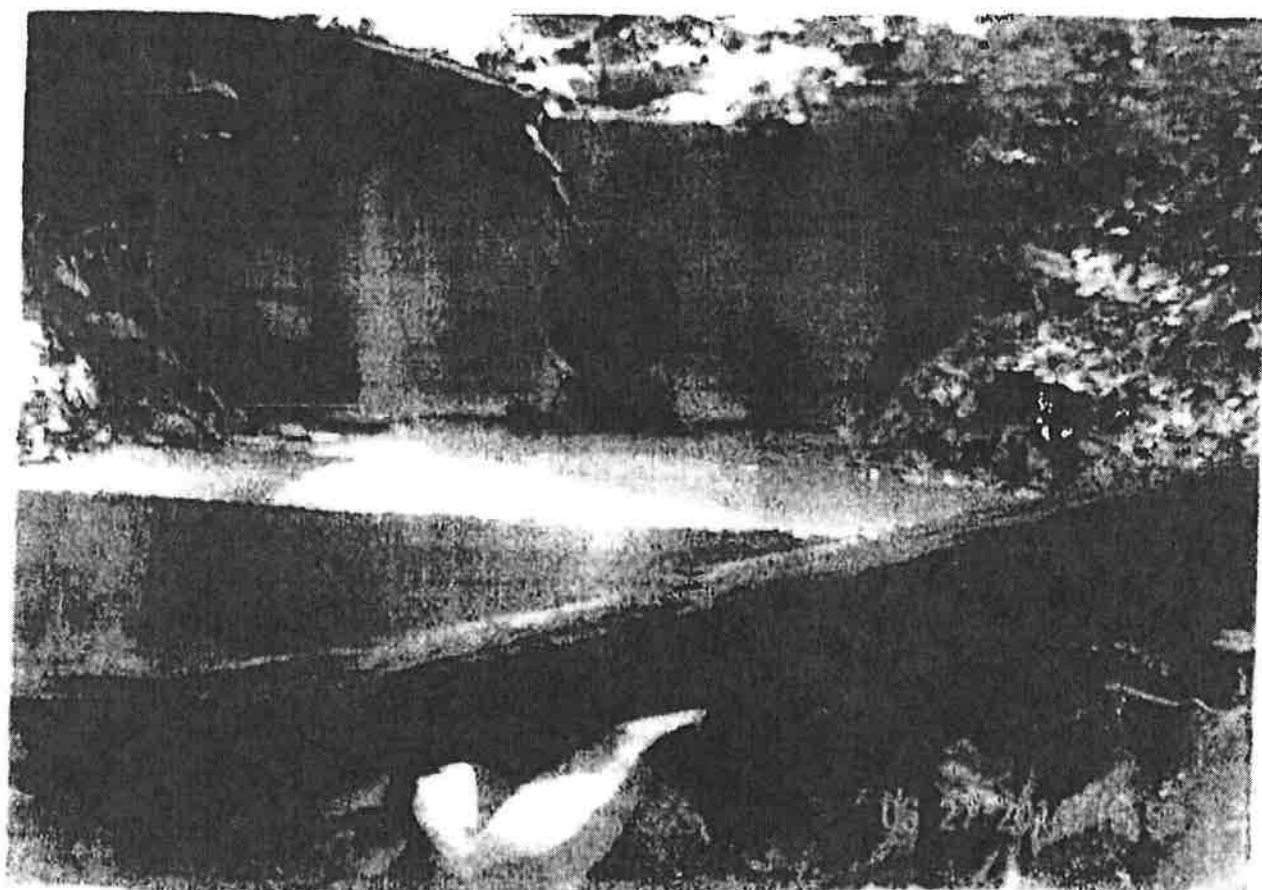


1520

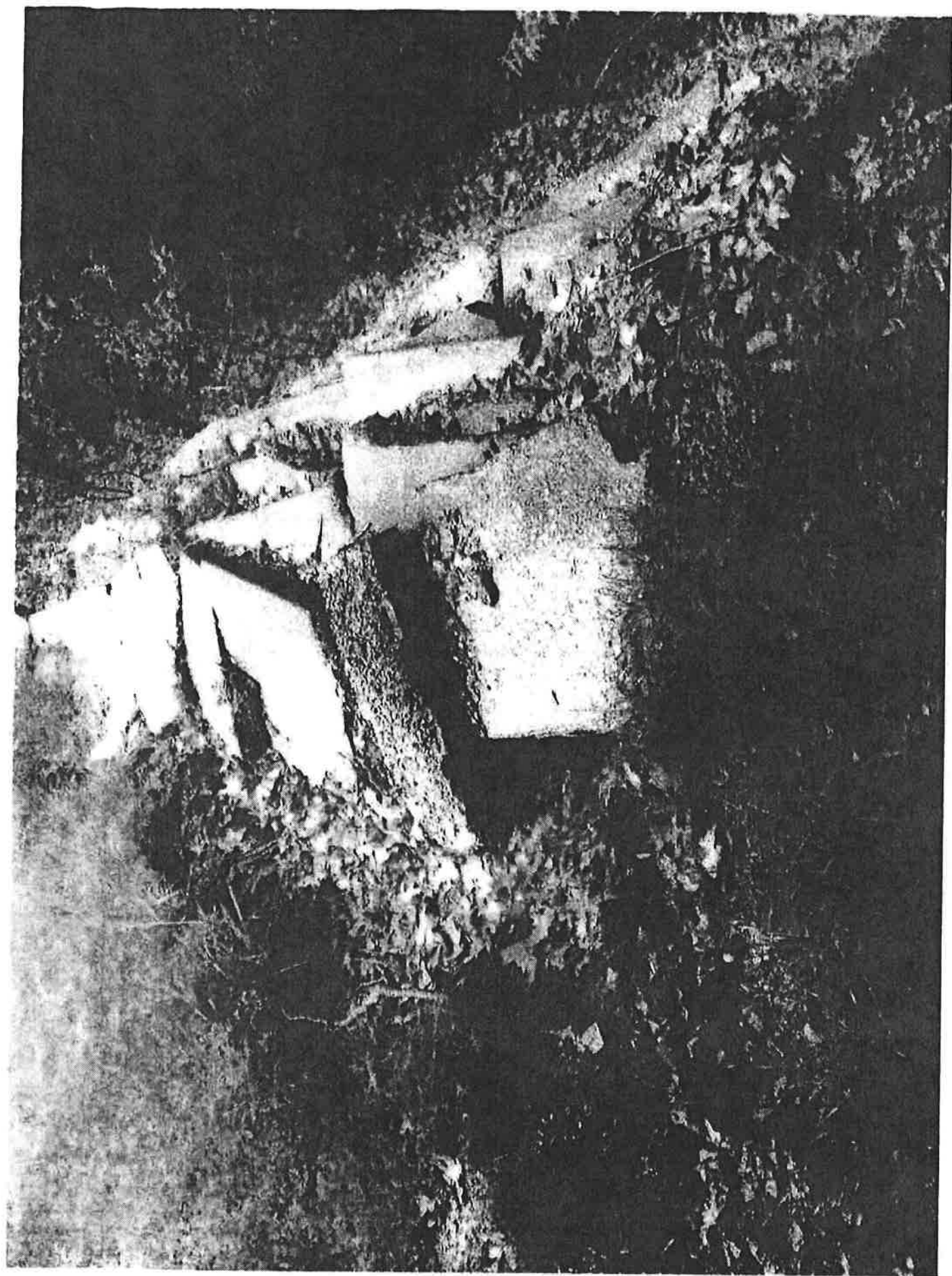












BENCH MARK
TOP OF STORM MANHOLE ON LOURDES DRIVE
APPROX. 417' W OF EAST PARKVIEW DRIVE
ELEV. = 1056.07

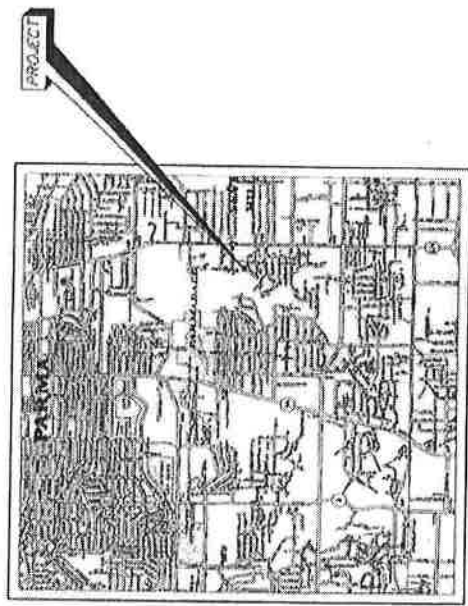
LOURDES DRIVE STORM SEWER OUTFALL REPAIR IMPROVEMENT PLANS CITY OF PARMA CUYAHOGA COUNTY ~ STATE OF OHIO

CONVENTIONAL SIGNS:

ITEM	EXISTING	PROPOSED	RECONSTRUCTED
1. 12" DIA. MANHOLE			
2. 12" DIA. MANHOLE			
3. 12" DIA. MANHOLE			
4. 12" DIA. MANHOLE			
5. 12" DIA. MANHOLE			
6. 12" DIA. MANHOLE			
7. 12" DIA. MANHOLE			
8. 12" DIA. MANHOLE			
9. 12" DIA. MANHOLE			
10. 12" DIA. MANHOLE			
11. 12" DIA. MANHOLE			
12. 12" DIA. MANHOLE			
13. 12" DIA. MANHOLE			
14. 12" DIA. MANHOLE			
15. 12" DIA. MANHOLE			
16. 12" DIA. MANHOLE			
17. 12" DIA. MANHOLE			
18. 12" DIA. MANHOLE			
19. 12" DIA. MANHOLE			
20. 12" DIA. MANHOLE			
21. 12" DIA. MANHOLE			
22. 12" DIA. MANHOLE			
23. 12" DIA. MANHOLE			
24. 12" DIA. MANHOLE			
25. 12" DIA. MANHOLE			
26. 12" DIA. MANHOLE			
27. 12" DIA. MANHOLE			
28. 12" DIA. MANHOLE			
29. 12" DIA. MANHOLE			
30. 12" DIA. MANHOLE			
31. 12" DIA. MANHOLE			
32. 12" DIA. MANHOLE			
33. 12" DIA. MANHOLE			
34. 12" DIA. MANHOLE			
35. 12" DIA. MANHOLE			
36. 12" DIA. MANHOLE			
37. 12" DIA. MANHOLE			
38. 12" DIA. MANHOLE			
39. 12" DIA. MANHOLE			
40. 12" DIA. MANHOLE			
41. 12" DIA. MANHOLE			
42. 12" DIA. MANHOLE			
43. 12" DIA. MANHOLE			
44. 12" DIA. MANHOLE			
45. 12" DIA. MANHOLE			
46. 12" DIA. MANHOLE			
47. 12" DIA. MANHOLE			
48. 12" DIA. MANHOLE			
49. 12" DIA. MANHOLE			
50. 12" DIA. MANHOLE			
51. 12" DIA. MANHOLE			
52. 12" DIA. MANHOLE			
53. 12" DIA. MANHOLE			
54. 12" DIA. MANHOLE			
55. 12" DIA. MANHOLE			
56. 12" DIA. MANHOLE			
57. 12" DIA. MANHOLE			
58. 12" DIA. MANHOLE			
59. 12" DIA. MANHOLE			
60. 12" DIA. MANHOLE			
61. 12" DIA. MANHOLE			
62. 12" DIA. MANHOLE			
63. 12" DIA. MANHOLE			
64. 12" DIA. MANHOLE			
65. 12" DIA. MANHOLE			
66. 12" DIA. MANHOLE			
67. 12" DIA. MANHOLE			
68. 12" DIA. MANHOLE			
69. 12" DIA. MANHOLE			
70. 12" DIA. MANHOLE			
71. 12" DIA. MANHOLE			
72. 12" DIA. MANHOLE			
73. 12" DIA. MANHOLE			
74. 12" DIA. MANHOLE			
75. 12" DIA. MANHOLE			
76. 12" DIA. MANHOLE			
77. 12" DIA. MANHOLE			
78. 12" DIA. MANHOLE			
79. 12" DIA. MANHOLE			
80. 12" DIA. MANHOLE			
81. 12" DIA. MANHOLE			
82. 12" DIA. MANHOLE			
83. 12" DIA. MANHOLE			
84. 12" DIA. MANHOLE			
85. 12" DIA. MANHOLE			
86. 12" DIA. MANHOLE			
87. 12" DIA. MANHOLE			
88. 12" DIA. MANHOLE			
89. 12" DIA. MANHOLE			
90. 12" DIA. MANHOLE			
91. 12" DIA. MANHOLE			
92. 12" DIA. MANHOLE			
93. 12" DIA. MANHOLE			
94. 12" DIA. MANHOLE			
95. 12" DIA. MANHOLE			
96. 12" DIA. MANHOLE			
97. 12" DIA. MANHOLE			
98. 12" DIA. MANHOLE			
99. 12" DIA. MANHOLE			
100. 12" DIA. MANHOLE			

INDEX OF SHEETS

- 1 TITLE SHEET
- 2 SITE PLAN
- 3 PLAN
- 4 GENERAL NOTES
- 5 DETAILS



LOCATION MAP
NOT TO SCALE



**2 WORKING DAYS
BEFORE YOU DIG**
CALL TOLL FREE (800) 362-2764
FOR PRELIMINARY INFORMATION
OR GROUPS CALL (800) 925-0988
OHIO DEPT. OF TRANSPORTATION
DIVISION OF HIGHWAYS

PAID BY CUYAHOGA COUNTY
CITY OF PARMA ENGINEER

1 6

TITLE SHEET
STORM SEWER OUTFALL REPAIR
LOURDES DRIVE
CITY OF PARMA
CUYAHOGA COUNTY, OHIO

FORWARD & ASSOCIATES, INC.
ONE HICKORY & SHAWNEE
SUITE 100
COLUMBUS, OHIO 43260
TEL: (614) 861-1111
FAX: (614) 861-1112

DATE: 10/1/01

BY: J. B. BROWN

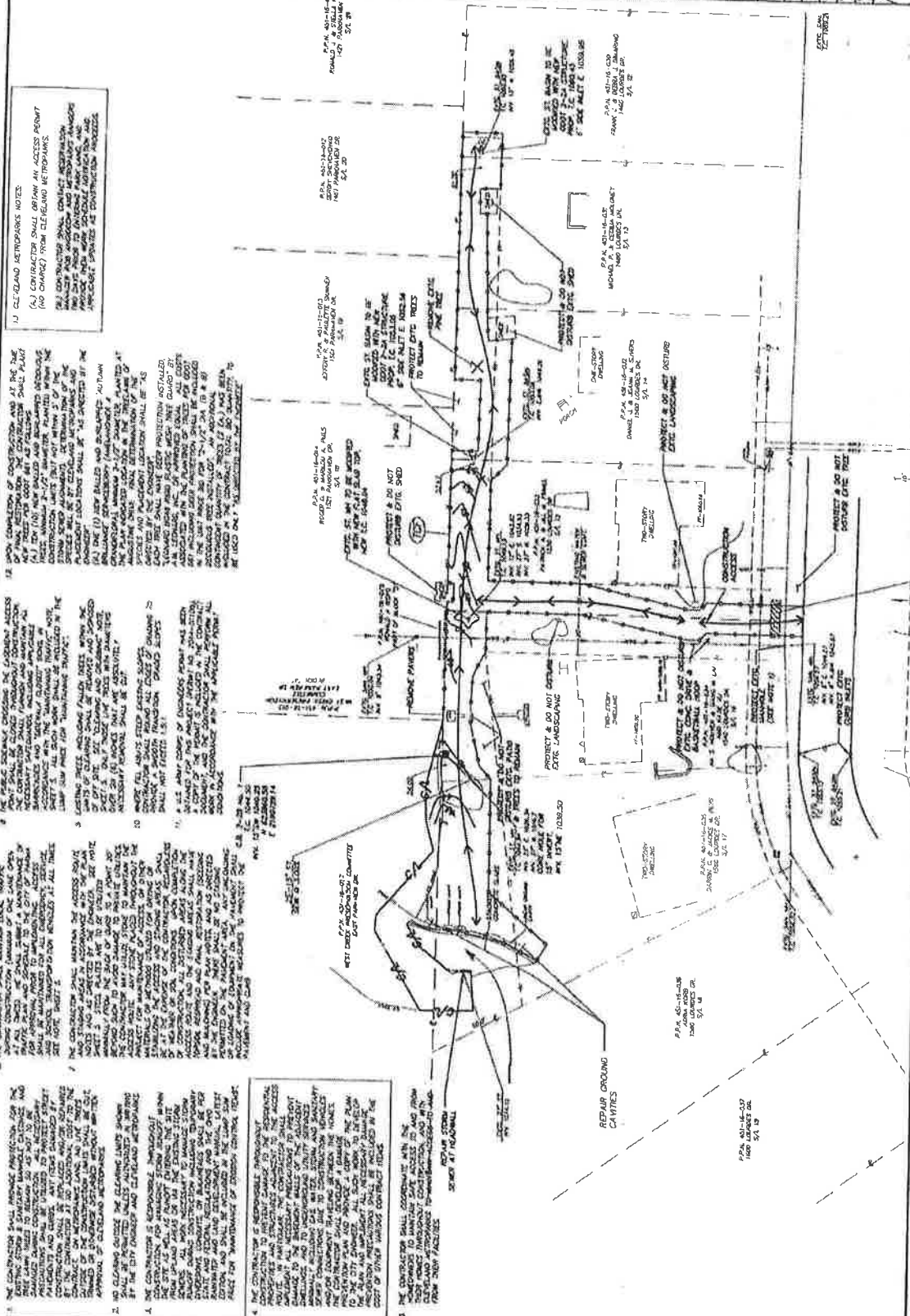
DATE: 10/1/01

BY: J. B. BROWN

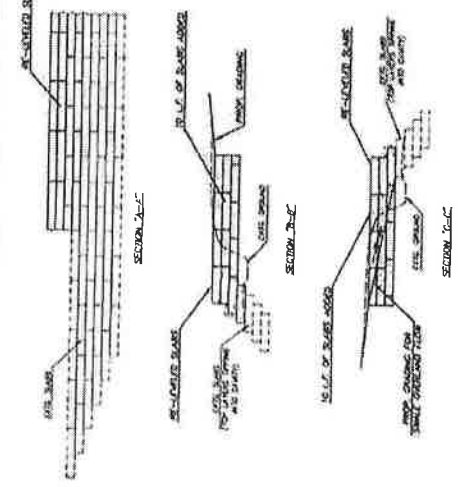
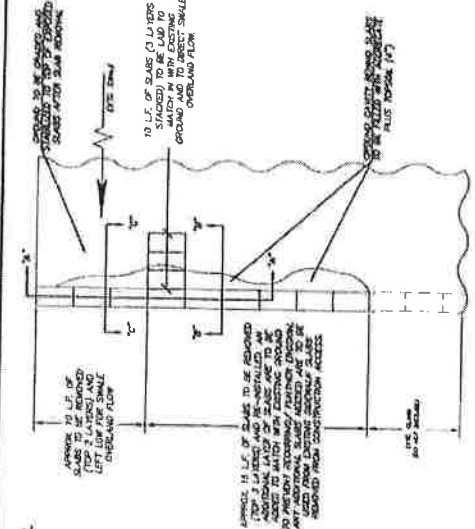
DATE: 10/1/01

BY: J. B. BROWN

26



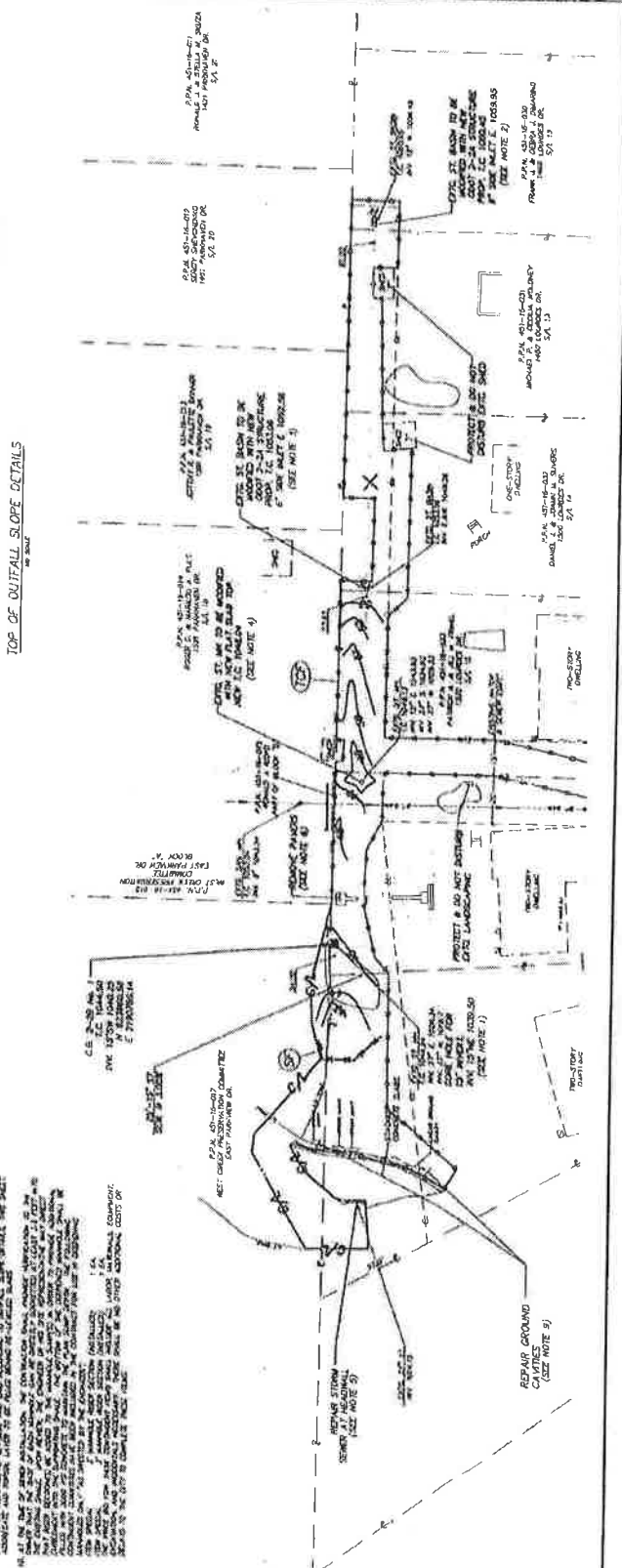
- [illegible]



NOTES:

1. THE PROPOSED STORM SEWER SHALL BE CONSTRUCTED WITH THE EXISTING STORM SEWER AS SHOWN ON THE PLAN. THE PROPOSED STORM SEWER SHALL BE CONSTRUCTED WITH THE EXISTING STORM SEWER AS SHOWN ON THE PLAN. THE PROPOSED STORM SEWER SHALL BE CONSTRUCTED WITH THE EXISTING STORM SEWER AS SHOWN ON THE PLAN.
2. THE PROPOSED STORM SEWER SHALL BE CONSTRUCTED WITH THE EXISTING STORM SEWER AS SHOWN ON THE PLAN. THE PROPOSED STORM SEWER SHALL BE CONSTRUCTED WITH THE EXISTING STORM SEWER AS SHOWN ON THE PLAN. THE PROPOSED STORM SEWER SHALL BE CONSTRUCTED WITH THE EXISTING STORM SEWER AS SHOWN ON THE PLAN.
3. THE PROPOSED STORM SEWER SHALL BE CONSTRUCTED WITH THE EXISTING STORM SEWER AS SHOWN ON THE PLAN. THE PROPOSED STORM SEWER SHALL BE CONSTRUCTED WITH THE EXISTING STORM SEWER AS SHOWN ON THE PLAN. THE PROPOSED STORM SEWER SHALL BE CONSTRUCTED WITH THE EXISTING STORM SEWER AS SHOWN ON THE PLAN.
4. THE PROPOSED STORM SEWER SHALL BE CONSTRUCTED WITH THE EXISTING STORM SEWER AS SHOWN ON THE PLAN. THE PROPOSED STORM SEWER SHALL BE CONSTRUCTED WITH THE EXISTING STORM SEWER AS SHOWN ON THE PLAN. THE PROPOSED STORM SEWER SHALL BE CONSTRUCTED WITH THE EXISTING STORM SEWER AS SHOWN ON THE PLAN.
5. THE PROPOSED STORM SEWER SHALL BE CONSTRUCTED WITH THE EXISTING STORM SEWER AS SHOWN ON THE PLAN. THE PROPOSED STORM SEWER SHALL BE CONSTRUCTED WITH THE EXISTING STORM SEWER AS SHOWN ON THE PLAN. THE PROPOSED STORM SEWER SHALL BE CONSTRUCTED WITH THE EXISTING STORM SEWER AS SHOWN ON THE PLAN.

TOP OF OUTFALL SLOPE DETAILS



DONALD G. BOWMAN & ASSOCIATES, INC.

GENERAL NOTES
LOURDES DRIVE
STORM SEWER OUTFALL REPAIR
CITY OF PARMA
CUYAHOGA COUNTY, OHIO

100-443887-100

[illegible][illegible][illegible]

DETAILS
CORRUGATED METAL ROOF
STORM SEWER OUTFALL REPAIR
CITY OF PARMA
OUTLAHOGA COUNTY, OHIO

1. THE ROOF SHALL BE CONSTRUCTED OF CORRUGATED METAL SHEETING, TYPE "P", 24 GAUGE, GALVALUME, 16" HIGH RIBS, 12" DEEP, 30" WIDE, WITH A MINIMUM THICKNESS OF 0.016" (16 GA). THE SHEETING SHALL BE LAPPED 12" AND FASTENED WITH 1/2" DIA. GALV. WASHERS AND 1/4" DIA. GALV. BOLTS, 6" LONG, AT 24" ON CENTER, ALONG ALL EAVES AND UP ELEVATIONS. THE BOLTS SHALL BE 1/4" DIA. GALV. WASHERS AND 1/4" DIA. GALV. BOLTS, 6" LONG, AT 24" ON CENTER, ALONG ALL EAVES AND UP ELEVATIONS. THE BOLTS SHALL BE 1/4" DIA. GALV. WASHERS AND 1/4" DIA. GALV. BOLTS, 6" LONG, AT 24" ON CENTER, ALONG ALL EAVES AND UP ELEVATIONS.

2. THE ROOF SHALL BE INSTALLED OVER A 2" THICK POLYSTYRENE INSULATION BOARD, TYPE "XPS", 15 LB/FT³, 2" THICK, WITH A MINIMUM R-VALUE OF 10. THE INSULATION SHALL BE CUT TO FIT THE ROOF SHEETING AND FASTENED WITH 1/2" DIA. GALV. WASHERS AND 1/4" DIA. GALV. BOLTS, 6" LONG, AT 24" ON CENTER, ALONG ALL EAVES AND UP ELEVATIONS. THE BOLTS SHALL BE 1/4" DIA. GALV. WASHERS AND 1/4" DIA. GALV. BOLTS, 6" LONG, AT 24" ON CENTER, ALONG ALL EAVES AND UP ELEVATIONS.

3. THE ROOF SHALL BE INSTALLED OVER A 4" THICK CONCRETE SLAB, TYPE "C", 4" THICK, WITH A MINIMUM COMPRESSIVE STRENGTH OF 4000 PSI. THE CONCRETE SHALL BE CAST IN PLACE AND FINISHED TO A SMOOTH, LEVEL SURFACE. THE CONCRETE SHALL BE CAST IN PLACE AND FINISHED TO A SMOOTH, LEVEL SURFACE.

4. THE ROOF SHALL BE INSTALLED OVER A 4" THICK CONCRETE SLAB, TYPE "C", 4" THICK, WITH A MINIMUM COMPRESSIVE STRENGTH OF 4000 PSI. THE CONCRETE SHALL BE CAST IN PLACE AND FINISHED TO A SMOOTH, LEVEL SURFACE. THE CONCRETE SHALL BE CAST IN PLACE AND FINISHED TO A SMOOTH, LEVEL SURFACE.

5. THE ROOF SHALL BE INSTALLED OVER A 4" THICK CONCRETE SLAB, TYPE "C", 4" THICK, WITH A MINIMUM COMPRESSIVE STRENGTH OF 4000 PSI. THE CONCRETE SHALL BE CAST IN PLACE AND FINISHED TO A SMOOTH, LEVEL SURFACE. THE CONCRETE SHALL BE CAST IN PLACE AND FINISHED TO A SMOOTH, LEVEL SURFACE.

