

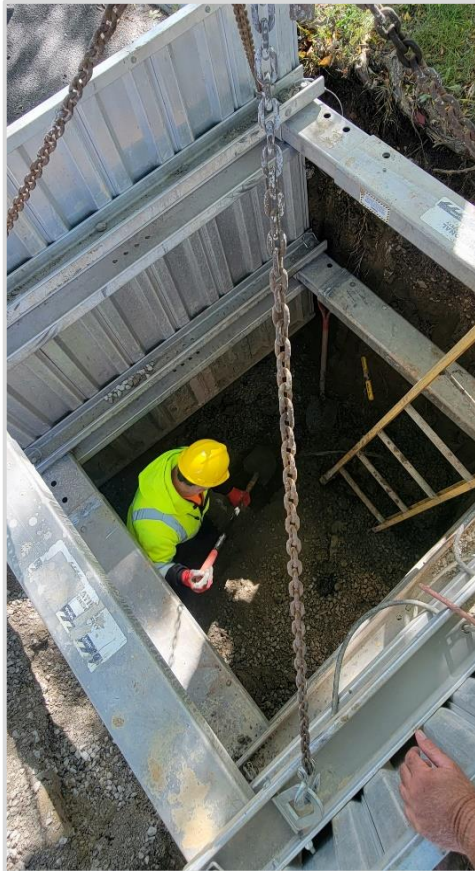


Cuyahoga County
Together We Thrive

2022 Annual Report

Prepared
for the:

City of Parma



By the: **Department of Public Works**





March 13, 2023

The Honorable Timothy DeGeeter
City of Parma
6611 Ridge Road
Parma, Ohio, 44129

Dear Mayor DeGeeter,

As the Director of Public Works, I am pleased to submit the 2022 Annual Report for the City of Parma. Our work within the communities, including yours, focuses on addressing infrastructure needs and meeting Ohio EPA goals for collection system operation and maintenance. We continue to provide efficiency for sanitary and storm sewer maintenance throughout the County by maintaining a second shift to enable us to reduce overtime and to work in areas where normal working hour traffic is problematic. Our goal is always to provide a high level of service in a cost-effective manner.

Through the work of our dedicated staff members, we have been able to continue to provide reliable maintenance services throughout our service area and we will continue to provide quality service for our member communities throughout the year.

This annual report contains a detailed overview of the work completed within your municipality in the past year. The overview of the work performed includes the following: collection system jet cleaning and CCTV inspection history, plan approval status, service program summary details and community operating and capital expenses.

The annual report for this and previous years is also available on our website at:

<https://cuyahogacounty.us/publicworks/services/sewer-maintenance-services>

The Rules and Regulations and Uniform Standards and Details issued by the County continue to be available on our web site:

<https://www.cuyahogacounty.us/publicworks/services/design-and-construction/sanitary-design/sanitary-design-construction-drawings-and-standards>

My staff is available to meet with you at your convenience should you wish to discuss this report or any of the services that our department provides. I am pleased and grateful for the opportunity of serving you through the Cuyahoga County Department of Public Works.

Respectfully submitted,

A handwritten signature in blue ink, appearing to read "Michael W. Dever".

Michael W. Dever, MPA, Director
Department of Public Works

cc: (with attachments)

Tony Vannello, Service Director
Hasmukh Patel, P.E, City Engineer



The Power of Consolidation

2501 Harvard Avenue – Newburgh Heights

Sanitary Engineering, Road & Bridge & Fleet Management are consolidated at one location



The Harvard Avenue Maintenance Yard facility is home to approximately 180 staff members and is geographically centralized in Cuyahoga County to better serve the surrounding communities.

- ADA-compliant design for all Office, Conference , and Training Room areas
- Conference and Training Rooms for up to 200 visitors
- Fleet Maintenance Area features: 9 static lifts and 3 mobile lifts
- Vehicle fueling areas for both Diesel and Gasoline
- Interior Vehicle Wash Bay
- LED Lighting for Interior Office, Garage, Exterior Parking Lot and Site Lighting
- Materials Storage Yard
- Dispatch Area
- Permits Area





SANITARY FLEET FACTS

THE POWER OF REGIONALISM



Current vehicles & equipment	Quantity
House Trucks	13
Specialized Plate Truck & specialized vehicles for catch basin repair	7
Combination Jet-Vac & Straight Jet Trucks	10
TV Camera Trucks	7
Backhoes, Mini Excavators & Rubber Wheel Loader	7
Class 5 Dump Trucks	6
Construction trucks	8
1-ton trucks for pump station service	5
43,000 to 53,000 GVWR single-axle dump trucks	6
58,000 to 60,000 GVRW tandem axle dump trucks	12
Class 550 with crane for pump station service	3
20-25 ton trailers	11
Small Trailers	13



Table of Contents



Overview.....1

Appendix Description.....8

Community Streets Cleaned.....A-1

Community Streets Televised.....A-2

Plan Approval Status.....A-3

Service Report Summary.....A-4

Community Operating Expenses.....A-5

Community Capital Expenses.....A-6

Contact Information.....Rear Folio



OVERVIEW

Established in 1919, the office of the Cuyahoga County Sanitary Engineer was created to provide administrative authority in matters of wastewater, storm water, and water supply management. In 2012, the Sanitary Engineering Division (formerly CCSE) became a part of the Cuyahoga County Department of Public Works (CCDPW), and now operates under County Executive Chris Ronayne.

The Sanitary Division's focus is on the maintenance and repair of aging sewer lines, sewer system needs assessment, engineering feasibility studies, and other infrastructure-related issues. These areas all have a direct impact on commercial and residential development, job creation, and expanding the tax base in the communities served by the Department of Public Works. Furthermore, the Sanitary Division is a major source of technical information for communities (mayors, municipal engineers, and service directors), which provides them with guidance for making infrastructure decisions within their community. The Sanitary Division has considerable experience in the maintenance, repair, and rehabilitation of sanitary and storm sewer systems, as well as significant expertise with respect to the operation and maintenance of pump stations and wastewater treatment plants.



The Sanitary Engineering Division of Public Works currently operates in 38 communities by agreement. Pursuant to such agreements, the Sanitary Division maintains more than 1,500 miles of sanitary sewers and 1,100 miles of storm sewers and operates 67 sewage-pumping stations. Working in cooperation with the Ohio Environmental Protection Agency (Ohio EPA), the Northeast Ohio Regional Sewer District (NEORS), the Cuyahoga County Board of Health (CCBH), and the various communities, the Sanitary Division works to maintain water quality. This is done through the construction of new sanitary sewers, maintenance of existing sewer systems, and the investigation and remediation of illicit discharges (sanitary sewage which is improperly discharged into storm sewers).

All funds used for operation, maintenance, rehabilitation, and repair of the sewerage system are generated through fees and assessments. (Funding is not via the County's General Fund to perform these activities.)

The Department of Public Works has been in the forefront of regionalism efforts within the County. With services provided to more than half of the County's 59 communities, the Sanitary Division continues to maintain reasonable rates and improve infrastructure throughout the area.



GOALS

The Sanitary Engineering Division of Public Works has three (3) major goals:

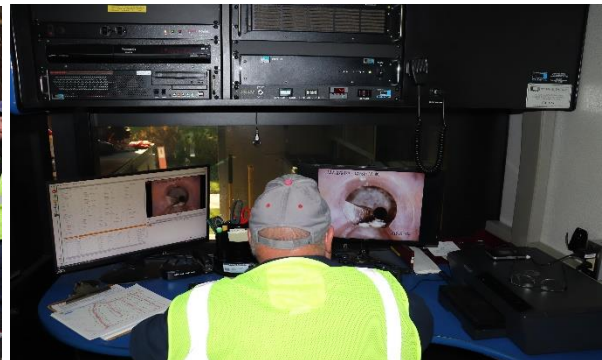


1. Operate and maintain the sanitary sewerage systems to assist the communities in meeting the goals and objectives of the EPA Capacity Management Operation and Maintenance (CMOM) guidelines.
2. Provide guidelines for design and construction through the County's *"Uniform Standards for Sewerage Improvements"* and *"Rules and Regulations."*
3. Issue sewer connection permits and provide construction inspection for new sanitary sewers and new connections to existing sanitary sewers.

The goals of the Sanitary Engineering Division with respect to the maintenance and repair of sewers are accomplished through the activities of our three main Sanitary Division groups working together: Maintenance Services; Engineering & Construction Services; and Administrative Services.

MAINTENANCE SERVICES

- Reduction of the number of flooded basements by maintaining existing capacity in the collection systems, minimize the inflow/infiltration of storm water to the sanitary system, and evaluate the structural integrity of the sewerage system;
- Optimization of maintenance efficiency to reduce operating costs and provide more available funds for capital improvement projects and repairs;
- Operation of wastewater treatment plants in compliance with the National Pollution Discharge Elimination System (NPDES) permit parameters;
- Maintenance and inspection of the existing collection system to achieve EPA CMOM maintenance goals;
- Operation and maintenance of pumping stations;
- Performance of Illicit Discharge Detection and Elimination Services





ENGINEERING AND CONSTRUCTION SERVICES

- Preparation of Task Orders for repairs and rehabilitation;
- Plan review and approval of all new sewer improvements within the County service area;
- Performance of engineering analyses (required for operation of facilities and the collection system);
- Capital improvement planning;
- Construction management and inspection;
- Provision of guidelines for new construction through use of the CCDPW *Uniform Standards for Sewerage Improvements*;
- Provision of infrastructure needs assessment for communities;
- Project design;
- Construction inspection of new wastewater collection systems within the county service area; and,
- Record keeping of as-built plans and test tee locations.



ADMINISTRATIVE SERVICES

- Issuance of connection permits;
- Maintenance of Record Drawings;
- Provision of Geographical Information Systems (GIS) for development and implementation;
- Fiscal oversight of annual operating budget and capital improvement budget;
- Administration of Grants and loans; and,
- Licensing and permitting of more than 200 contractors.

SUMMARY OF COUNTY-WIDE MAINTENANCE SERVICES

■ SEWERS

- High-pressure jetting of sewers in the right-of-way, approximately **305 miles of sewers in 2022**
- Point repairs of sewers, force mains, and structures; **2,746 construction visits; and 884 catch basins cleaned;**
- **Cleaning of 7,824 service laterals**, including emergency maintenance and 24-hour on-call team for resident issues;
- **CCTV inspection** of approximately **253 miles** of sewers to provide condition ratings, failures and/or deficiencies;
- **I/I investigation and remediation, 287 visits;**
- Implementation of preventative maintenance and upgrades to pumping stations, as well as the provision of licensed operators to monitor the condition of those facilities.





The Maintenance Services Department provides a full-service program to clean sewers, provide National Association of Sewer Service Companies (NASSCO) Pipeline Assessment Certification Program (PACP) condition ratings of sewers, maintain the structural integrity of the sewer systems, and perform repairs on sanitary and storm sewers. The objective of the program is the cleaning of all sanitary sewers every three years and performing video inspection every six years. This timeline is well within the NEORS's *"Best Management Practices"* guidelines.

■ HOUSE LATERAL SERVICES

The Maintenance Services House Lateral Service Department cleaned 7,824 house lateral connections in 2022. The goal is to alleviate sewer back-ups by clearing blocked mains and cleaning service connections to restore sewer capacity.

The House Lateral Service Department also performs flow monitoring for Inflow and Infiltration (I&I) analysis, dye testing, smoke testing, and lateral sewer inspection to identify I&I sources and locations of illicit discharges. The Department works with the communities, the Ohio EPA and the NEORS to protect local waterways.





■ PUMPING STATIONS

The County operates 67 pumping stations throughout the 38 communities pursuant to the maintenance agreements. A Supervisory Control and Data Acquisition (SCADA) system monitors the stations. The system provides alarms and operational status through a central computer, providing 24-hour monitoring. New pump stations are added to the SCADA system as they come on-line. Our maintenance staff consists of experienced operators and technicians enabling us to repair most problems in-house, therefore keeping costs down. Their preventive maintenance program and dedication to the job has reduced emergency callouts and overflows.



■ CAPACITY, MANAGEMENT, OPERATION, AND MAINTENANCE PROGRAM (CMOM)

The CMOM Program is a set of “best management practices” that have been developed by the industry and are applied over the life cycle of the sewer collection system. It is these general practices that are taken into consideration when a system is being reviewed by a federal or state agency. Improvement and recommendations are provided by the agencies based on deficiencies identified in the sanitary sewer system.

We continue to work with the NEORS (through their community discharge program) and with the Ohio EPA to ensure that our Sanitary Division’s best practices meet the CMOM goals.





SUMMARY OF ENGINEERING & CONSTRUCTION SERVICES

The Engineering and Construction Services Departments provide technical services to the communities including, but not limited to, capital project planning, grant and loan administration, design engineering, construction management, as well as inspection of sanitary and storm sewers, and pump stations.

The sewer repair and rehabilitation program is managed by in-house personnel. A Sanitary Division engineer is assigned to each community to provide an individual contact for sewer related issues. Under the existing sewer maintenance agreements (based on video inspection information and requests from the communities), the County issues Task Orders for repair and rehabilitation by our personnel, supplemented by several third-party contractors.

In 2022, on behalf of member communities, design plans were reviewed for over 50 construction projects. The Sanitary Engineering Division also coordinates and analyzes the results of field testing and flow monitoring to detect and eliminate storm water inflow/infiltration (I/I) from the sanitary sewer system and illicit discharges to the storm sewer system. Record drawings are prepared, scanned, and filed for record keeping. Information on new sewers and service connections is provided to our IT personnel for incorporation into the County's Geographical Information System (GIS).

The Sanitary Engineering Division and the Construction Department also oversee capital construction projects, including the development of financial packages in the form of grants and loans obtained from the State of Ohio. These funds are utilized for lining, repairing, replacing, and rehabilitating existing sanitary and storm sewerage systems.

The Construction staff provides inspection of all new sanitary sewers and for the connection of service laterals to existing sewers. The Inspectors ensure that projects are constructed in conformance to design plans, specifications, and the County's *"Uniform Standards."*





SUMMARY OF ADMINISTRATIVE SERVICES

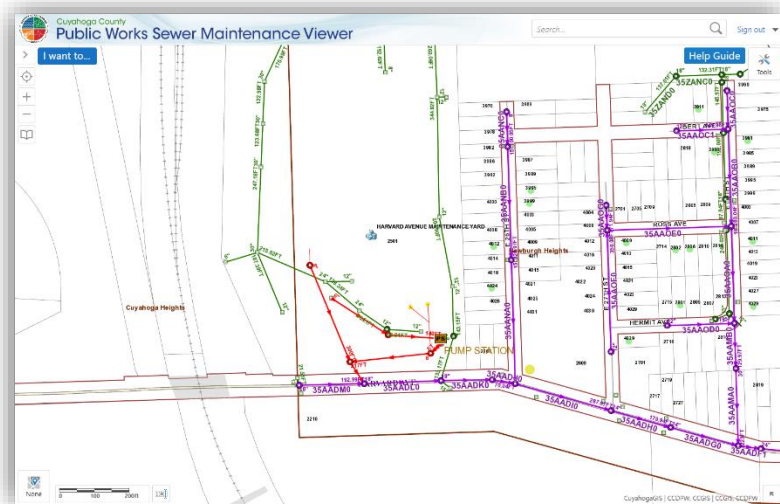
■ **PERMITS**

The County issues residential and commercial sewer service connection permits for 38 communities. Only contractors registered with the Department of Public Works can obtain a permit. The permit process includes inspection by the County to ensure that the work is performed in conformance to the “Uniform Standards and Details”. Permanent records of all sewer connections are maintained by the County.

■ **INFORMATION TECHNOLOGY**

Information Technology (IT) provides computer and analytical support to internal end-users and to the communities serviced by the CCDPW. IT is responsible for the design, implementation, and maintenance of our Geographical Information System (GIS), other relational database systems, and guiding data acquisition tasks throughout the CCDPW. The GIS mapping program catalogues the location of sewer systems and performs analysis on spatial data. This information supports the planning, design, and maintenance of sewer systems, and ensures user fees are appropriately assessed and collected. Furthermore, the mapping program features access to information regarding permits that are on record.

Our Geographical Information System is continually being updated and expanded to include information on repair and rehabilitation activities as well as system maintenance and inspection activities. Information is shared between the County, member communities, and the NEORS to improve services and foster collaboration.



■ **FINANCE**

The Finance Department provides support services to various units within the CCDPW. Automated cost accounting programs and systems ensure accurate tracking and monitoring of expenditures, revenues, rate structures, and other data that provide financing for capital projects and operational budgets. All systems and programs are operated under generally accepted accounting principles. The CCDPW oversees an annual storm and sanitary sewer operating budget of more than \$26 million. Finance is responsible for accounts receivable, accounts payable, cost accounting, audit, inventory control, capital project financing, purchasing, and sewer assessment revenue management for member communities.

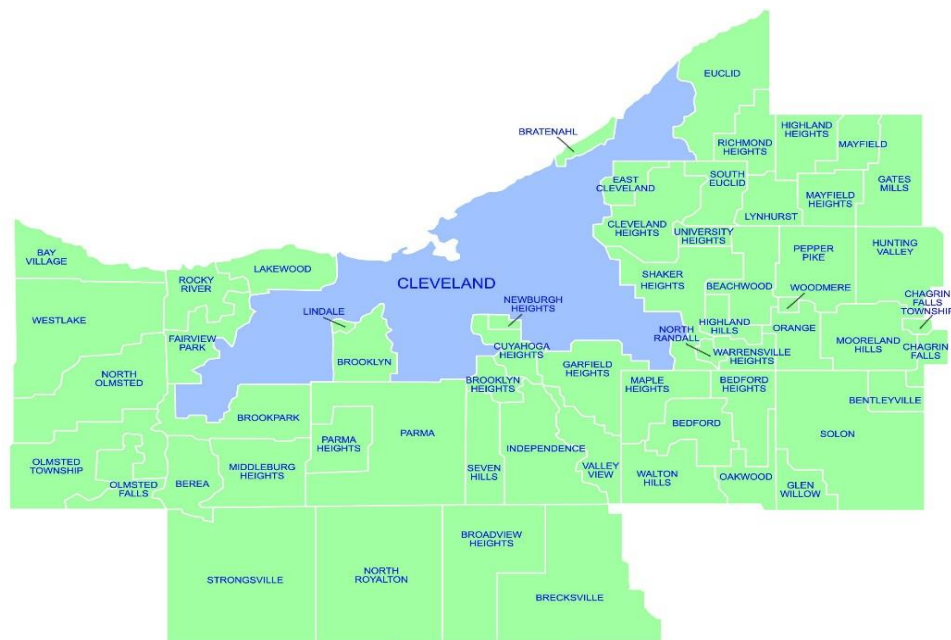


Appendix Description*

The following appendices contain a variety of reports representing the services provided to member communities in 2022. The CCDPW follows a manhole-to-manhole, sewer segment-based accounting method for jet cleaning and TV (video) inspection maintenance services. The first two appendices contain listings of the collection system cleaned and inspected for the year by street. The next appendix lists the plan approvals for the more significant projects submitted to, reviewed, and approved by the Engineering Department during the year for your community. Smaller review services such as house connections or ongoing, intermittent reviews of large multi-phase projects spanning several years of development are not shown on this report. The final appendices provide a breakdown of services including house visits, inflow/infiltration studies, construction activity, operating expenses, and capital project costs contracted for the community.

This annual report, along with a map showing areas where collection system mainlines were jet cleaned and TV inspected, locations where construction crew activities were provided, house visits where house lateral connections needed to be cleaned or inspected, is available on our website at <https://cuyahogacounty.us/publicworks/services/sewer-maintenance-services/city-service-maps-annual-reports>. Adobe Corporation's free reader software is required and can be downloaded from www.adobe.com.

*** Please note:** These appendix reports are provided only to communities for which specific services are provided by the CCDPW. For example, if a regularly scheduled mainline cleaning service is not provided for your community, a map was not produced. Similarly, if project review or capital project management services are not provided for your community, then there is also no corresponding report. Furthermore, certain specific member communities are provided limited maintenance only on County improvement mainlines and/or facilities.



Community Streets Cleaned*



Section A-1

*No service provided if section is blank

2022 Collection System Jet Cleaning

PARMA

SANITARY

Street Count: 111

STREET	Jet footage	# of segments
ALBERTLY AVENUE	2,733	11
ALLANWOOD DRIVE	543	5
AUGUSTINE DRIVE	3,190	17
BERTHA AVENUE	2,237	8
BRAINARD DRIVE	1,286	5
BROADVIEW ROAD	2,646	15
BROOKPARK ROAD	620	1
BROOKVIEW BOULEVARD	2,373	9
CHESTNUT HILLS DRIVE	646	2
CLEARVIEW AVENUE	1,156	7
COCOA DRIVE	264	1
COMMONWEALTH DRIVE	1,614	6
CORAL GABLES DRIVE	1,132	5
COVENTRY DRIVE	258	2
DALESIDE DRIVE	1,911	11
DARTMOOR AVENUE	2,163	10
DAWNWOOD DRIVE	563	4
DAWN HAVEN DRIVE	2,201	7
DECKER DRIVE	439	3
EAST PARKVIEW DRIVE	439	3
EDGECLIFF DRIVE	1,920	16
ENDERBY DRIVE	587	4
ENGLEWOOD DRIVE	1,421	5
ESSEN AVENUE	10	1
FAIRLAWN DRIVE	2,485	9
FARNSWORTH DRIVE	375	1
FATIMA DRIVE	494	3
FERNHILL AVENUE	280	1
FORDHAM DRIVE	1,020	5
FOREST AVENUE	2,917	9
FORESTWOOD DRIVE	259	1
FORTUNE AVENUE	3,068	2
FOX HOLLOW DRIVE	0	1
FREEHOLD ROAD	664	3
GEORGE AVENUE	541	3
GETTYSBURG DRIVE	2,902	14
GRANT DRIVE	1,133	5

SANITARY- continued

STREET	Jet footage	# of segments
GRANTWOOD DRIVE	3,920	14
HERESFORD DRIVE	1,501	5
HILLSDALE AVENUE	1,072	4
HOPEHAVEN DRIVE	0	1
INGLESIDE DRIVE	1,202	4
JAMESTOWN DRIVE	1,587	9
JEANNE DRIVE	1,032	4
JOYCE DRIVE	450	1
KENMORE AVENUE	300	1
KENTON AVENUE	103	1
KEYSTONE ROAD	253	2
KORDIAK DRIVE	610	3
LEE DRIVE	1,065	6
LIGGETT DRIVE	300	1
LINCOLN AVENUE	1,875	7
LONGWOOD AVENUE	4,773	20
LORIMER ROAD	6,785	23
LOURDES DRIVE	3,084	22
LOYOLA DRIVE	939	5
MAGDALA DRIVE	130	1
MAPLECREST AVENUE	1,592	6
MARIONCLIFF DRIVE	2,403	12
MASON DRIVE	1,353	7
MAYSDAY AVENUE	368	3
MAZEPA TRAIL	1,598	9
MEADOWLAWN BOULEVARD	903	4
MILFORD AVENUE	1,575	3
MONMOUTH DRIVE	236	1
MONTAUK AVENUE	575	1
NATHAN AVENUE	671	4
NIGHT VISTA DRIVE	1,080	4
NORFOLK DRIVE	406	3
NORTH AVENUE	2,254	8
NOTTINGHAM DRIVE	10	2
ONAWAY OVAL	1,160	8
PARK BOULEVARD	254	1
PARK DRIVE	3,343	10
PARKHAVEN DRIVE	1,528	7
PARKLANE DRIVE	1,935	6

SANITARY- continued

STREET	Jet Footage	# of segments
PARKLEIGH DRIVE	1,301	5
PERSHING AVENUE	1,253	2
PINEHURST DRIVE	272	1
PLAZA DRIVE	646	6
POWERS BOULEVARD	400	1
RENWOOD DRIVE	1,458	5
RIDGE ROAD	3,152	22
RIDGEWOOD DRIVE	347	2
ROANOKE DRIVE	872	7
RUSSELL AVENUE	4,050	13
RUSTIC TRAIL	2,525	15
RUSTIC EASEMENT	412	3
SNOW ROAD	612	2
SOUTH PARK BOULEVARD	965	6
SHERATON DRIVE	2,373	10
SHERMAN DRIVE	955	4
SHERIDAN DRIVE	912	4
SHILO CIRCLE	325	3
ST PETERSBURG DRIVE	70	1
STATE ROAD	435	4
STAUNTON DRIVE	1,897	12
SUN RAY DRIVE	389	3
THEOTA AVENUE	750	1
THORNCLIFFE BOULEVARD	1,720	13
TORRINGTON AVENUE	2,994	3
TREETOP COURT	75	1
TUXEDO AVENUE	6,794	23
TWIN LAKES DRIVE	1,073	5
VIRGINA AVENUE	521	2
WALES AVENUE	4,347	19
WARD ROAD	405	5
WELLINGTON AVENUE	1,960	8
WEST 16 STREET	938	4
WEST 17 STREET	880	3
WEST 24 STREET	145	1
WEST 29 STREET	822	3
WEST 44 STREET	613	3
WEST 46 STREET	200	1
WEST 48 STREET	1,069	2
WEST 60 STREET	1,313	4

SANITARY- continued

STREET	Jet Footage	# of segments
WEST PARKVIEW DRIVE	1,083	1
WEST RIDGEWOOD DRIVE	2,819	15
WEST SPRAGUE ROAD	0	1
WESTMINSTER DRIVE	5,808	28
WILLIAMSBURG DRIVE	241	1
WINCHESTER DRIVE	2,649	22
WOOD AVENUE	330	1
WOODLAWN DRIVE	1,102	9
WOODWAY DRIVE	162	1
YORK ROAD	50	1
YORKTOWN DRIVE	1,559	9
JET SANITARY TOTAL:	170,758	769

STORM

Street Count: 51

STREET	Jet Footage	# of segments
ALBERTLY AVENUE	3,348	12
ALLANWOOD ROAD	1,405	7
AMES ROAD	60	1
ANDOVER DRIVE	135	1
BARON DRIVE	85	1
BAUERDALE AVENUE	59	1
BERTHA AVENUE	2,522	9
BRAINARD DRIVE	1,284	6
BROADVIEW ROAD	110	1
CLEARVIEW AVENUE	1,585	6
CORAL GABLES DRIVE	1,127	8
DALESIDE DRIVE	662	6
DARTMOOR AVENUE	1,148	4
DENTZLER ROAD	1,270	1
ENDERBY DRIVE	597	4
ESSEN AVENUE	4,617	16
FAIRLAWN DRIVE	2,436	9
FOREST AVENUE	1,050	1
FREEHOLD ROAD	197	1
GRANTWOOD DRIVE	2,480	10
HEARTHSTONE DRIVE	3,662	17
JEANNE DRIVE	4,394	3

STORM - continued

STREET	Jet Footage	# of segments
KENYON DRIVE	896	3
LONGWOOD AVENUE	3,396	11
LORIMER ROAD	1,485	5
MAGDALA DRIVE	262	2
MAYSDAY AVENUE	306	2
MEADOWLAWN BOULEVARD	755	3
NATHAN AVENUE	536	3
NIGHT VISTA DRIVE	528	3
NORTH AVENUE	0	1
NOTTINGHAM DRIVE	1,990	4
ONAWAY OVAL	1,185	8
PARK DRIVE	300	1
PELHAM DRIVE	290	1
PINEHURST DRIVE	244	2
REICHERT ROAD	0	1
RIDGE ROAD	4,025	18
RIDGEWOOD DRIVE	3,668	59
SHERATON DRIVE	2,225	8
SNOW ROAD	1,857	5
STATE ROAD	40	3
TANGLEWOOD LANE	0	1
TWIN LAKES DRIVE	647	3
VIRGINA AVENUE	1,519	6
WEST 16 AVENUE	1,016	4
WEST 60 AVENUE	646	2
WEST MORELAND ROAD	1,502	8
WEST RIDGEWOOD DRIVE	1,844	49
WESTMINSTER DRIVE	5,283	25
YORK ROAD	10	1
JET STORM TOTAL:	70,687	367

2022 JET SANITARY & STORM GRAND TOTAL: 241,445 1,136

Community Streets Inspected*



Section A-2

*No service provided if section is blank

2022 Collection System TV Inspection

PARMA

SANITARY

Street Count: 127

STREET	CCTV Footage	# of segments
ALBERTLY AVENUE	2,733	11
ALLANWOOD ROAD	1,431	8
AMBER LANE	250	1
AUGUSTINE DRIVE	3,190	17
BARON DRIVE	545	2
BERTHA AVENUE	2,236	8
BRAINARD DRIVE	1,286	5
BROADVIEW ROAD	2,658	15
BROOKDALE AVENUE	971	4
BROOKPARK ROAD	307	2
BROOKVIEW BOULEVARD	2,391	9
CHESTNUT HILLS DRIVE	1,378	5
CLEARVIEW AVENUE	1,156	7
COCOA DRIVE	264	1
COMMONWEALTH DRIVE	1,614	6
CORAL GABLES DRIVE	1,132	5
COVENTRY DRIVE	0	3
DALESIDE DRIVE	1,911	11
DARTMOOR AVENUE	2,163	10
DAWN HAVEN DRIVE	2,202	11
DAWNWOOD DRIVE	563	4
DECKER DRIVE	439	3
DENTZLER ROAD	36	10
EAST PARKVIEW DRIVE	439	3
EDGECLIFF DRIVE	2,109	17
ENDERBY DRIVE	587	4
ENGLEWOOD DRIVE	1,421	5
ESSEN AVENUE	769	3
FAIRLAWN DRIVE	2,485	9
FATIMA DRIVE	494	3
FENWAY DRIVE	228	1
FORDHAM DRIVE	1,763	6
FOREST AVENUE	3,079	10
FORTUNE AVENUE	1,970	8
FOX HOLLOW DRIVE	613	2
FREEHOLD ROAD	664	3
GEORGE AVENUE	593	3

SANITARY continued

STREET	CCTV Footage	# of segments
GETTYSBURG DRIVE	2,902	14
GRANT DRIVE	1,133	5
GRANTWOOD DRIVE	3,938	15
GROVEWOOD AVENUE	714	2
HERESFORD DRIVE	1,501	5
HILLSDALE AVENUE	1,072	4
INGLESIDE DRIVE	1,202	4
JAMESTOWN DRIVE	1,587	9
JEANNE DRIVE	3,675	13
KENMORE AVENUE	792	4
KEYSTONE ROAD	253	2
KING RICHARD EASEMENT	6	1
KORDIAK DRIVE	609	3
KRUEGER AVENUE	2,278	11
LEE DRIVE	1,065	6
LIGGETT DRIVE	1,038	4
LINCOLN AVENUE	4,162	16
LONGWOOD AVENUE	4,773	20
LORIMER ROAD	5,363	18
LOURDES DRIVE	3,084	22
LOYOLA DRIVE	704	4
MAGDALA DRIVE	130	1
MAPLECREST AVENUE	1,592	6
MARIETTA AVENUE	719	4
MARIONCLIFF DRIVE	2,891	13
MASON DRIVE	1,352	7
MAYSDAY AVENUE	368	3
MAZEPA TRAIL	1,598	9
MEADOW LANE	6	1
MEADOWLAWN BOULEVARD	903	4
NATHAN AVENUE	671	4
NIGHT VISTA DRIVE	1,080	4
NORFOLK DRIVE	406	3
NORTH AVENUE	2,203	8
NORTH CANTERBURY ROAD	76	1
NOTTINGHAM DRIVE	3,581	14
ONAWAY OVAL	1,160	8
PANAMA DRIVE	690	2
PARK DRIVE	5,485	19

SANITARY continued

STREET	CCTV Footage	# of segments
PARKHAVEN DRIVE	1,528	7
PARKLANE DRIVE	1,935	6
PARKLEIGH DRIVE	1,301	5
PINEHURST DRIVE	272	1
PLAZA DRIVE	646	6
RIDGE ROAD	2,676	19
RIDGEWOOD DRIVE	347	2
RENWOOD DRIVE	1,095	4
RIDGE ROAD	299	1
ROANOKE DRIVE	872	7
RUSTIC TRAIL	2,525	15
RUSSELL AVENUE	3,106	12
SOUTH PARK BOULEVARD	1,788	8
SHERATON DRIVE	2,373	10
SHERMAN DRIVE	955	4
SHERIDAN DRIVE	912	4
SHILO CIRCLE	325	3
ST PETERSURG DRIVE	70	1
STATE ROAD	1,188	6
STAUNTON DRIVE	1,897	12
SUNDERLAND DRIVE	898	3
SUN RAY DRIVE	389	3
THORNCLIFFE BOULEVARD	1,720	13
TORRINGTON AVENUE	1,737	7
TUXEDO AVENUE	2,903	11
TWINLAKES DRIVE	758	3
VIRGINA AVENUE	521	2
WALES AVENUE	2,361	13
WARD ROAD	201	2
WELLINGTON AVENUE	1,966	8
WEST 10 STREET	93	1
WEST 16 STREET	1,391	5
WEST 17 STREET	338	1
WEST 29 STREEET	822	3
WEST 31 STREET	300	1
WEST 44 STREET	585	3
WEST 45 STREET	45	1
WEST 54 STREET	16	1
WEST 60 STREET	1,313	4
WEST PARKVIEW DRIVE	3,213	20

SANITARY continued

STREET	CCTV Footage	# of segments
WEST PLEASANT VALLEY ROAD	715	1
WEST RIDGEWOOD DRIVE	2,819	15
WESTMINSTER DRIVE	6,402	33
WEXFORD AVENUE	2,372	9
WHITTINGTON DRIVE	1,590	6
WILBER AVENUE	332	1
WILLIAMSBURG DRIVE	241	1
WINCHESTER DRIVE	2,649	22
WOODLAWN DRIVE	1,102	9
WOOWAY DRIVE	162	1
YORKTOWN DRIVE	1,559	9
CCTV SANITARY TOTAL:		182,458
		873

STORM

Street Count: 83

STREET	CCTV Footage	# of segments
ALBERTLY AVENUE	3,346	12
ALLANWOOD ROAD	1,357	7
AMES ROAD	60	1
ANDOVER DRIVE	216	2
BARON DRIVE	212	1
BERTHA AVEVNUE	2,522	9
BRADLEY AVENUE	716	2
BRAINARD DRIVE	1,284	6
BRIAN DRIVE	204	1
BROADVIEW ROAD	110	1
BROOKPARK ROAD	307	1
CHESTNUT DRIVE	219	2
CHESTNUT HILLS DRIVE	1,068	4
CLEARIVEW AVENUE	1,585	6
COVENTRY DRIVE	0	3
CORAL GABLES DRIVE	1,127	8
DALESIDE DRIVE	662	6
DARTMOOR AVENUE	1,148	4
DAWN HAVEN DRIVE	1,361	2
DAWN VISTA OVAL	88	1
DELLWOOD DRIVE	44	1
DENTZLER ROAD	36	10
EAST LINDEN LANE	60	1

STORM- continued

STREET	CCTV Footage	# of segments
EDGECLIFF DRIVE	189	1
ENDERBY DRIVE	597	4
ESSEN AVENUE	5,224	18
EVERGREEN DRIVE	145	1
FAIRLAWN DRIVE	2,436	9
FARNSWORTH DRIVE	828	2
FOREST AVENUE	4,142	14
FREEHOLD ROAD	197	1
GRANTWOOD DRIVE	323	1
GRANTWOOD DRIVE	2,180	9
GREENLEAF AVENUE	78	1
HEARTHSTONE DRIVE	3,662	17
JEANNE DRIVE	5,635	21
JOYCE DRIVE	220	1
KENYON DRIVE	896	3
KING RICHARD EASEMENT	6	1
KLUSNER AVENUE	0	1
KRUEGER AVENUE	490	2
LANCELOT DRIVE	270	2
LANGERFORD DRIVE	171	1
LIST LANE	1,373	4
LONGWOOD AVENUE	3,396	11
LORIMER ROAD	3,294	11
MAGDALA DRIVE	262	2
MAYSDAY AVENUE	306	2
MEADOW LANE	6	1
MEADOWLAWN BOULEVARD	755	3
MILFORD AVENUE	0	1
NATHAN AVENUE	536	3
NIGHT VISTA DRIVE	528	3
NOTTINGHAM DRIVE	4,254	16
ONAWAY OVAL	1,185	8
PANAMA DRIVE	690	2
PARK DRIVE	5,353	17
PARKVIEW AVENUE	0	1
PELHAM DRIVE	290	1
PINEHURST DRIVE	244	2
POMPANO COURT	422	2
RENWOOD DRIVE	1,500	3
RIDGE ROAD	4,064	19

STORM continued

STREET	CCTV Footage	# of segments
RIDGEWOOD DRIVE	3,668	59
RUSSELL AVENUE	776	4
SANDY HOOK DRIVE	269	1
SHERATON DRIVE	2,225	8
SNOW ROAD	2,552	4
SOUTH PARK BOULEVARD	819	3
STANFIELD DRIVE	311	1
STATE ROAD	1,029	7
SUNDERLAND DRIVE	898	3
TANGLEWOOD LANE	521	2
TWIN LAKES DRIVE	647	3
VIRGINA AVENUE	1,519	6
WARD ROAD	201	2
WEST 16 STREET	1,016	4
WEST 60 STREET	646	2
WEST MORELAND ROAD	1,033	6
WEST PARKVIEW DRIVE	0	3
WEST PLEASANT VALLEY ROAD	715	1
WEST RIDGEWOOD DRIVE	1,844	49
WESTMINSTER DRIVE	6,290	32
CCTV STORM TOTAL:	100,857	513

2022 CCTV SANITARY & STORM GRAND TOTAL: 283,315 1,386



Plan Approvals*



Section A-3

*No service provided if section is blank

Parma Plan 2022 Approvals

Project ID	Project Name	Approval Date
21-039(1)	CHESTERFIELD TERRACE SENIOR HOUSING	29-Mar-2022
21-044(1)	PARMA SELF STORAGE (REVISIONS)	26-Apr-2022
22-001(1)	SPITZER JEEP BUILDING ADDITION	27-Apr-2022
22-019(1)	KRUEGER AVE. AREA SEWER IMPROVEMENT, PHASE 1	11-May-2022
22-010(1)	ARBY'S, PARMA	7-Jul-2022
22-007(1)	MAPLEWOOD GARDENS RESIDENTIAL DEVELOPMENT IMP	10-Aug-2022
22-022(1)	TRUENORTH RIDGE RD, PARMA	15-Aug-2022

Service Program Summary*



Section A-4

*No service provided if section is blank

City of Parma

<u>Type</u>	<u>Community Total</u>
Sanitary Sewers	1,268,160 Feet
Manholes	5,430(Approximately)

2022 Service Program

<u>Program</u>	<u>2022 Activity</u>
1) High Pressure Jet Cleaning Sanitary - 170,758 Feet Storm - 70,687 Feet	241,445 Feet
2) House Service	2,204 Calls
3) Television Inspection Sanitary - 182,458 Feet Storm - 100,857 Feet	283,315 Feet
4) Construction Activities	569 Job(s)
5) Dye Testing	19 Test(s)
6) Construction Permits Issued (Commercial) (Residential)	99 6
7) Plan Approvals	7 Plan(s)
8) Construction Inspection PUBLIC: Mainline & Lateral PRIVATE: Commercial & Residential	3,030 Feet 9,273 Feet
9) Catch Basins Cleaned	13

Community Operating Expenses*



Section A-5

*No service provided if section is blank

City of Parma
2022 Operating Expenses

<u>Activity</u>	<u>Cost</u>
1. Maintenance of Sanitary Sewerage Systems	\$3,063,208
2. Pump Station Operation and Maintenance	\$117,985
3. Engineering and/or Inspection	\$435,549
4. Capital Expenses (See Section A-6 if any)	\$1,173,216
Total Operating Expenses:	\$4,789,958

Community Capital Expenses*



Section A-6

*No service provided if section is blank

City of Parma
2022 Capital Expenses

Albertly Drive Repair	\$ 16,542
Brainard Road East Repair	\$ 29,768
Brainard Road West Repair	\$ 35,635
Broadrock Drill Drop Loan	\$ 13,300
Broadview Drill Drop Loan	\$ 22,158
Chestnut Hills Repair	\$ 22,726
Dartmoor Avenue Repair	\$ 23,081
Dawn Vista Lining	\$ 24,426
Dawn Vista Oval Repair	\$ 15,262
East Linden Pump Station PTI	\$ 3,175
Essen Drive Repair	\$ 27,514
Fairlawn Drive Repair	\$ 19,447
Fernhill Sewer Replacement Loan	\$ 98,325
Forest Avenue Repair	\$ 50,295
Jeanne Drive Repair	\$260,272
Langerford Lining	\$ 11,772
Larch Drive Repair	\$ 26,608
Longwood Avenue Repair	\$ 36,496
Maysday Drive Repair	\$ 13,217
Plaza Drive Repair	\$ 12,193
Ridge Road Repair	\$ 89,138
Sewer Repair Loan	\$ 82,740
South Park/Wellington Drive Repair	\$ 18,536
Twin Lakes Drive Repair	\$ 14,712
West Ridgewood Drive Repair	\$167,916
Westminster Drive Repair	\$ 24,451
Woodlawn Drive Repair	\$ 13,511

Total Capital Expenses: **\$ 1,173,216**



CONTACT INFORMATION

Department of Public Works Administrative Headquarters
2079 East Ninth Street - 5th Floor
Cleveland, OH 44115

Email: Publicworks@cuyahogacounty.us

Website: Publicworks.cuyahogacounty.us

Michael W. Dever, M.P.A.	Director of Public Works
David Ray, P.E, P.S.	Cuyahoga County Engineer
Bryan J. Hitch	Deputy Chief - Maintenance
Thomas P. Sotak, P.E.	Deputy Chief - Engineering
Mellany M. Seay	Finance & Operations Administrator
Nichole L. English, P.E.	Planning & Programming Administrator
Laura A. Weber, P.E.	Chief Section Engineer Sanitary
Edward V. Premen, M.B.A.	Business Services Manager

Department of Public Works
Sanitary Maintenance Division
2501 Harvard Avenue
Newburgh Heights, Ohio 44105

Dispatch Office.....	(216) 443-8201
Dispatch Email.....	PWDDispatch@cuyahogacounty.us
Administration.....	(216) 348-3867
Inspection & Permits.....	(216) 443-8209
Sewer Maintenance.....	Gary Green, Senior Supervisor(216) 443-8225
Sewer Maintenance.....	John Gribble, Senior Supervisor(216) 443-8227
Lateral Services.....	Brandon Skufca, Supervisor(216) 443-8226
Construction (EAST).....	Dave Novak, Supervisor(216) 348-4238
Construction (WEST).....	Mitchell Holt, Supervisor(216) 443-8229
Sewer Jetting.....	Tom Noy, Supervisor(216) 348-3901
Televised Inspection.....	Todd Swindell, Supervisor(216) 443-8224
Pump Station Operations.....	Robert Dietrich, Supervisor(216) 698-3566
Sewer Maintenance (2 nd).....	John Campbell, Supervisor(216) 443-8295
Sewer Maintenance (2 nd).....	Pat Mauk, Supervisor(216) 348-3849



Cuyahoga County
Together We Thrive

Cuyahoga County

Department of Public Works

Administrative Headquarters
2079 East Ninth Street
Cleveland, OH 44115
216.348.3800